

## Interior Exterior Commercial Sheet (w/ coordinating treads)

### Product Characteristics

Standard Spec	ASTM 1303
Classification	Type II Grade 1
Backing Class	Class B
Nominal Dimensions	6' Wide x 66' Long (1820mm x 20m)
Roll Size	44 Square Yards
Overall Thickness	2.5mm (0.100")
Recycled Contents	
Pre-Consumer	12.0%
Post-Consumer	8.0%
MR Credit 4.1	14.0% (Sum of Post-Consumer + 1/2 Pre-Consumer)
Warranty	Pathways is covered by a limited 5-year warranty. Visit our website, <a href="http://www.cbcflooring.com">www.cbcflooring.com</a> , for complete details.



### Test Performance

	Characteristic	Test Method	Requirement	Performance
	Thickness	ASTM F386	≥ 0.040"	Passes. (2.5mm/0.100" as tested)
	Wear Layer Thickness - Grade 1 (Commercial)	ASTM F410	≥ 0.050"	Passes.
	Wear Layer Composition - Type II	Certificate of Compliance	≥ 34% binder	Passes.
ASTM F1303	Indentation	ASTM F1914	≤ 0.007"	Passes. (0.003" as tested)
	Flexibility	ASTM F137	1/4 mandrel, no cracks or breaks	Passes.
	Chemical Resistance	ASTM F925	No more than slight change in surface dulling, surface attack, or staining.	Passes.
	Resistance to Heat	ASTM F1514	ΔE ≤ 8.0	Passes. (ΔE ≤ 1.0 as tested)
	Resistance to Light	ASTM F1515	ΔE ≤ 8.0	Passes. (ΔE ≤ 1.0 as tested)
	Static Load Limit (@175psi)	ASTM F970	≤ 0.005"	Passes. (0.000" as tested)
Additional Tests	Static Load Limit (Modified)	ASTM F970	≤ 0.005"	250 psi. (0.001" as tested) 750 psi (0.003" as tested)
	Static Coefficient of Friction	ASTM D2047	≥ 0.5	≥ 0.8 ADA Compliant (wet and dry)
	Critical Radiant Flux	ASTM E648	0.45 W/cm <sup>2</sup> or more-Class I	Class I (> 0.45 W/cm <sup>2</sup> )
	Smoke Generation	ASTM E662	450 or less	<450 (Flaming and Non-flaming)
	VOC Emissions	CA 01350	TVOC ≤ 0.5 mg/m <sup>3</sup>	Passes. FloorScore Certified FS-03268



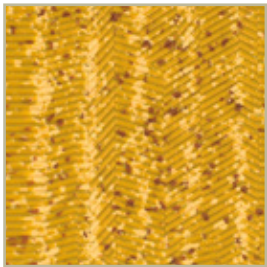
82 Taupe



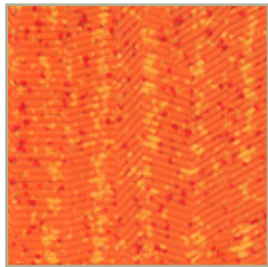
91 Grey



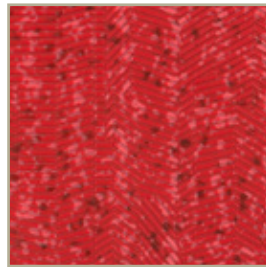
92 Charcoal



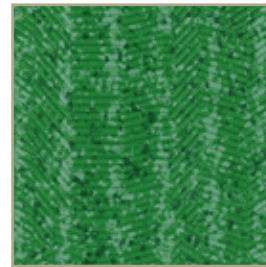
31 Golden



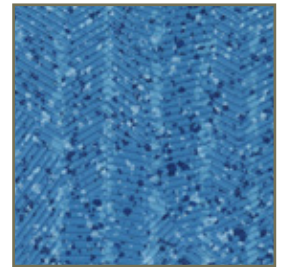
21 Sunset



11 Crimson



41 Meadow



51 Heavenly