

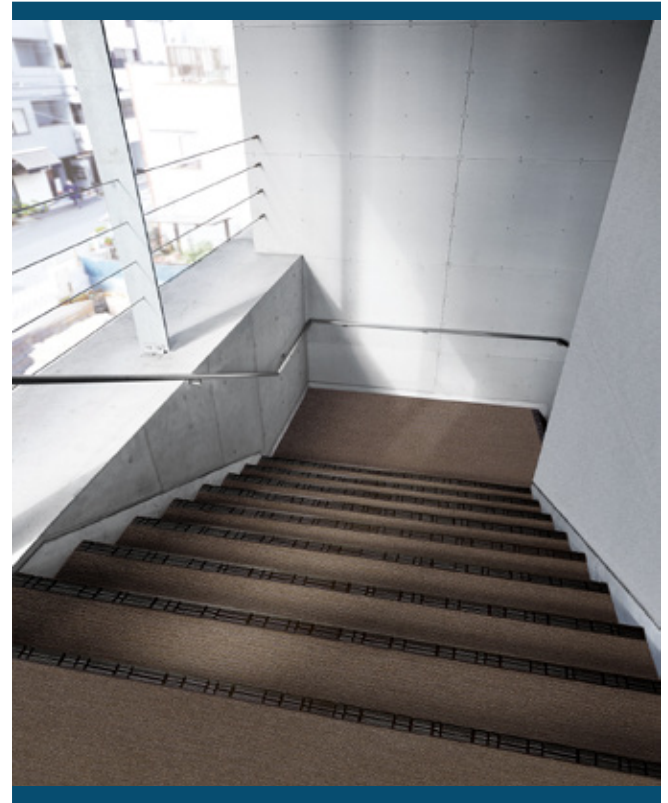
# Stair Treads

## Product Information and Technical Data

### Interior Exterior Commercial Tread/Riser

#### Product Characteristics

Standard Spec	ASTM F2169
Classification	Type TV, Class 2
Grade	2
Nosing Style	One-piece tread/riser/nosing (square)
Packaging	4' (1220mm) Length 7 pcs/ctn
	6' (1828mm) Length 5 pcs/ctn
Tread Thickness	2.5mm (0.10")
Tread Depth	500mm (19.69")
Nose Height	40mm (1.57")
Nosing Thickness	4.2mm (0.165")
Recycled Contents	
Pre-Consumer	6.0%
Post-Consumer	4.0%
MR Credit 4.1	7.0% (Sum of Post-Consumer + 1/2 Pre-Consumer)
Warranty	Takiron Stair Treads are covered by a limited 5-year warranty. Visit our website, <a href="http://www.cbcflooring.com">www.cbcflooring.com</a> , for complete details.



#### Test Performance

	Characteristic	Test Method	Requirement	Performance
ASTM F2169	Thickness	ASTM F386	$\pm 1/32"$ (0.8mm)	Passes.
	Hardness	ASTM D2240	70-85	Passes.
	Composition of Materials	Certificate of Compliance	Thermoplastic	Passes.
	Chemical Resistance	ASTM F925	No more than slight change in surface dulling, surface attack, or staining.	Passes.
	Resistance to Heat	ASTM F1514	$\Delta E \leq 8.0$	Passes. ( $\Delta E \leq 1.0$ as tested)
Additional Tests	Resistance to Light	ASTM F1515	$\Delta E \leq 8.0$	Passes. ( $\Delta E \leq 1.0$ as tested)
	Static Load Limit (Modified)	ASTM F970	$\leq 0.005"$	600 psi. (0.005" as tested)
	Static Coefficient of Friction	ASTM D2047	$\geq 0.5$	$\geq 0.8$ ADA Compliant (wet and dry)
	Critical Radiant Flux	ASTM E648	0.45 W/cm <sup>2</sup> or more-Class I	Class I (> 0.45 W/cm <sup>2</sup> )
	Smoke Generation	ASTM E662	450 or less	<450 (Flaming and Non-flaming)
	VOC Emissions	CA 01350	TVOC $\leq 0.5$ mg/m <sup>3</sup>	Passes.

# Stair Treads

Product Information and Technical Data

Interior Exterior Commercial Tread/Riser  
Nattice Coordinates

(Color coordinating nose available in 4' and 6' widths / Yellow nose available in 6' width)



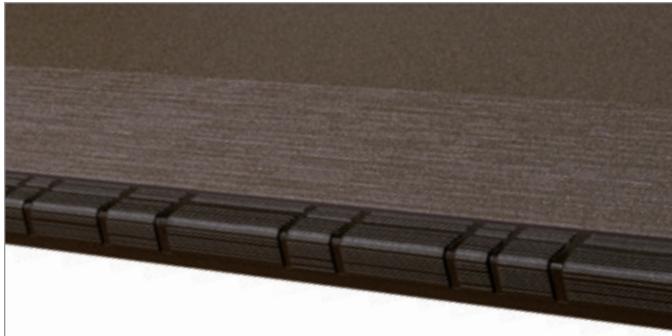
833-8WN

Autumn Fog



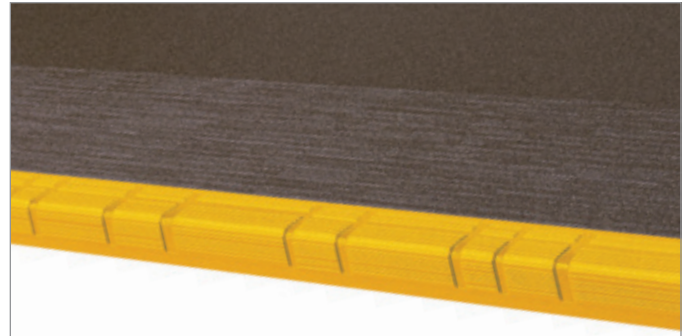
833-8YN

Autumn Fog w/Yellow Nose



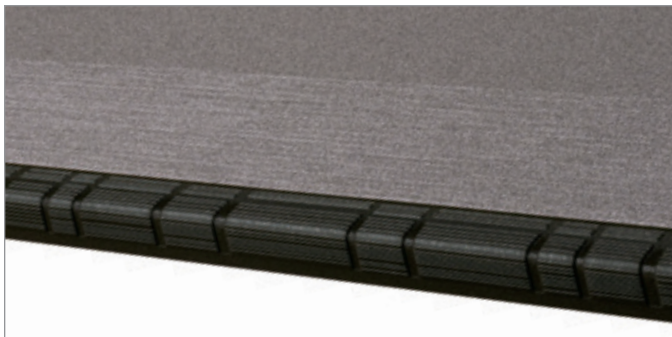
837-8WN

Mudslide



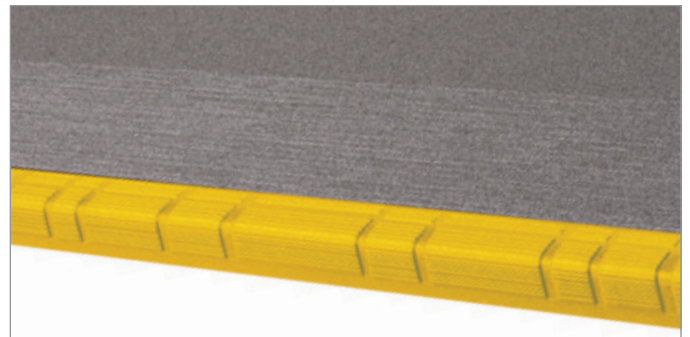
837-8YN

Mudslide w/Yellow Nose



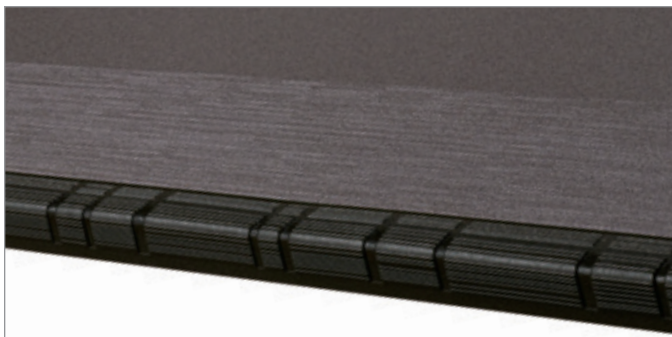
936-8WN

Chromed Cloud



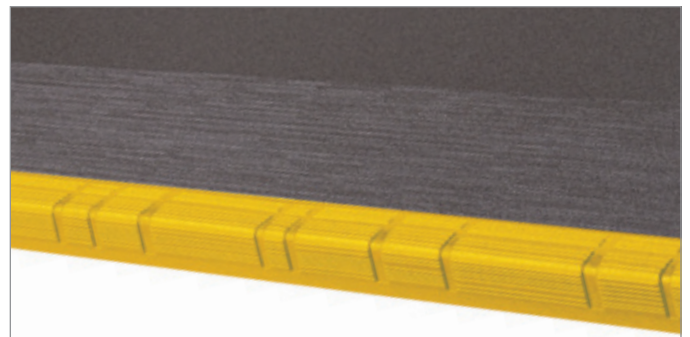
936-8YN

Chromed Cloud w/Yellow Nose



937-8WN

Storm



937-8YN

Storm w/Yellow Nose



# Stair Treads

Product Information and Technical Data

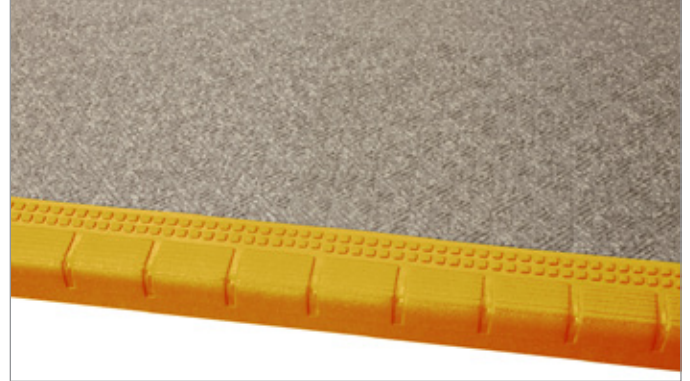
Interior Exterior Commercial Tread/Riser  
Pathways Coordinates

(Color coordinating nose available in 4' and 6' widths / Yellow nose available in 6' width)



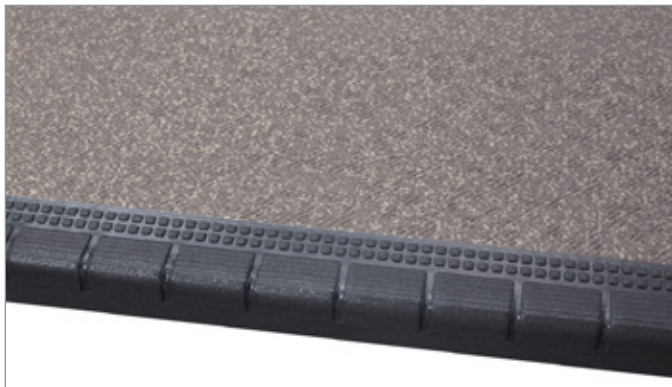
82-5WP

Taupe



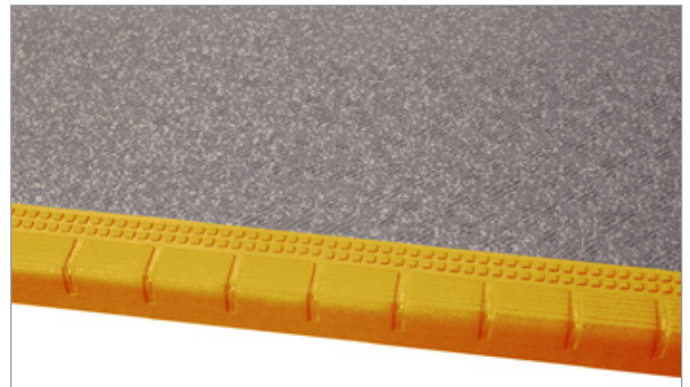
82-5YP

Taupe w/Yellow Nose



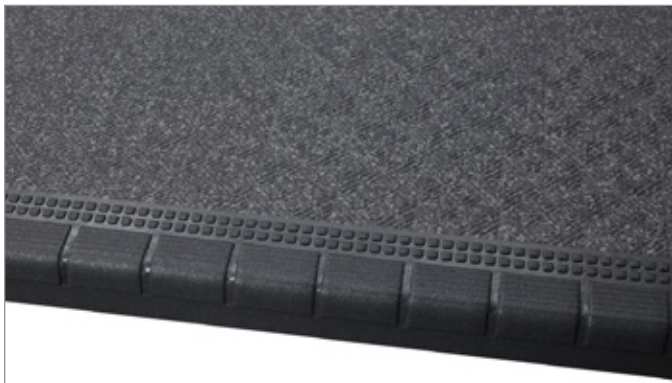
91-5WP

Grey



91-5YP

Grey w/Yellow Nose



92-5WP

Charcoal



92-5YP

Charcoal w/Yellow Nose