

Exclusively from
CBC® Flooring

TOLI Homogeneous Vinyl Tile

FASOLPLUS® + LINOTESTA® + VIALE®



COMMERCIAL
TILE FLOORING

CBC Flooring

TOLI HVT



A Colorful History and Future.

For years, architects and designers have relied on TOLI's homogeneous vinyl tile for their most demanding projects. Given the wide array of colorways, FasolPlus, Linotesta and Viale transcend all commercial settings – especially healthcare, education, retail and corporate.

The allure of these products extends well beyond their color palettes as they were developed to meet the demanding needs of high-traffic commercial interiors. And their through-pattern construction means their beauty is more than skin deep.

Trust the experience. Trust TOLI.

Trust the experience™.

Our colors are vibrant through and through. Literally.

Thanks to through-pattern construction, the color literally runs throughout the entire thickness of every single tile. And that means the rich and bright colors will stand the test of time even in high traffic areas.

Trust the experience. Trust TOLI.



TOLI® Homogeneous Vinyl Tile

- **Factory applied finish** for protection during installation
- **Through-pattern construction** – pattern goes all the way through the tile
- **18" x 18" oversized tile** – eliminates 60% of the seams found with standard VCT
- Rich vibrant and saturated colors creating a subtle organic look
- Tiles can be installed in the same direction creating a monolithic, organic appearance
- Easy to water jet or sonic cut for inlaid designs
- Quieter underfoot than standard VCT
- ASTM F 970 – 1,000 PSI compared to standard VCT
- No stripping required after installation

IDEAL FOR HIGH TRAFFIC APPLICATIONS



HEALTHCARE



EDUCATION



RETAIL

GET SAMPLES FAST 919-230-8700 cbcflooring.com

Questions? Give us a call, we're ready to help you create your next great space.

LINOTESTA



532 Misty



516 Limestone



508 Mushroom



513 Steel



517 Iron



522 Dusty



514 Shadow



531 Sage



510 Anise



515 Onyx



520 Blue Wave

FASOLPLUS



2007 Cotton



2038 Silver



2041 Gunmetal



2073 Cove

FASOLPLUS



2061 Pebble



2010 Flax



2011 Parchment



2012 Buttermilk



2062 Taupe



2042 Latte



2050 Straw



2022 Wheat



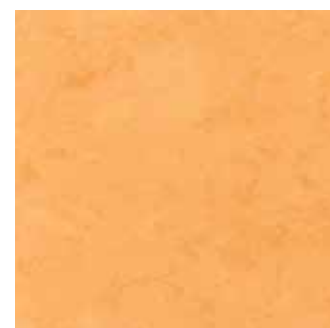
2072 Boulder



2074 Mineral



2023 Caramel



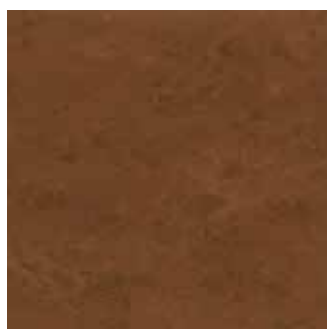
2024 Melon



2040 Ebony



2063 Java



2043 Coppertone



2026 Spice

FASOLPLUS



2029 Sunflower



2037 Orchid



2034 Sky



2011 Parchment



2025 Pumpkin



2068 Raspberry



2035 Twilight



2050 Straw



2066 Tangerine



2002 Sangria



2006 Blueberry



2023 Caramel



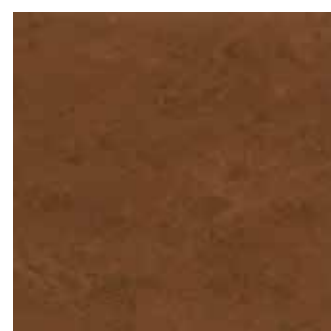
2076 Koi



2071 Grape



2057 Sapphire



2043 Coppertone

VIALE



608

Buff



609

Suede



6001

Khaki



TOLI Linotesta



607

Oyster



653

Fawn



654

Charcoal

Recommended Product Applications

The following application chart is provided to aid in understanding where our flooring products are recommended for use. This application chart is a subjective recommendation and is predicated upon the adherence to proper installation techniques; specific location of installation; level of foot traffic; and the type and professional level of maintenance practiced on-site. As there is a wide range of variables within an environment and the characteristics of each application may vary significantly, please consult with your CBCA Flooring sales representative to determine which CBCA Flooring product is appropriate for your installation.



Healthcare/Hospital

	Mature Select	HVT I & HVT II	Piesta	Lightwood / Kareina Asento	Pathways/Stair Treads
Cafeterias/Dining/Break Area	★	★	★	★	★
Chapel, Worship Center	★	★	★	★	★
Corridor (exterior)					★
Corridor (interior)	★	★	★	★	★
Dialysis	★	★	★	★	
Elevator	★	★	★	★	★
Emergency Department	★	★	★	★	
Exam/Prep Room	★	★	★	★	
Gift Shop	★	★	★	★	★
Hydrotherapy Room	★				★
Hyperbaric Room	★	★	★	★	★
Intensive Care	★	★	★	★	
Labor Delivery Room	★	★	★	★	
Laboratory	★	★	★	★	
Lavatory	★	★	★	★	★
Lobby	★	★	★	★	★
Neonatal Intensive Care	★	★	★	★	
Nurse's Station	★	★	★	★	
Office/Admin/Conf. Room	★	★	★	★	★
Operating Room (Outpatient)	★	★		★	
Parking Garage Walkway/ Elevator (exterior)					★
Patient Room	★	★	★	★	
Pharmacy	★	★	★	★	★
Physical Therapy	★	★	★	★	★
Ramp (interior/exterior)					★
Scrub Area	★				★
Staff Lounge	★	★	★	★	★
Stairway/Landing (interior/ exterior)					★
Storage/Utility Room	★	★	★	★	★
Waiting Room	★	★	★	★	★



Assisted Living

	Mature Select	HVT I & HVT II	Lightwood / Kareina Asento	Piesta	Pathways/Stair Treads
Activity Room/Common Area	★	★	★	★	★
Beauty Salon/Barber Shop	★	★	★	★	★
Cafeteria/Dining/Break Area	★	★	★	★	★
Corridor (exterior)					★
Corridor (interior)	★	★	★	★	★
Doctor/Dentist Area	★	★	★	★	★
Elevator	★	★	★	★	★
Lobby	★	★	★	★	★
Office/Admin/Conf. Room	★	★	★	★	★
Pharmacy	★	★	★	★	★
Poolside (interior/exterior)					★
Ramp (interior/exterior)					★
Residence Bathroom	★	★	★	★	★
Residence Kitchen	★	★	★	★	★
Residence Room	★	★	★	★	
Staff Lounge	★	★	★	★	★
Stairway/Landing (interior/ exterior)					★
Storage/Utility Room	★	★	★	★	★



Hospitality

	Mature Select	HVT I & HVT II	Lightwood / Kareina Asento	Piesta	Pathways/Stair Treads
Balcony/Deck					★
Cafeteria/Dining/Break Area	★	★	★	★	★
Corridor (exterior)					★
Corridor (interior)	★	★	★	★	★
Dance Floor	★			★	
Elevators	★	★	★	★	★
Exercise Rooms	★	★		★	★
Guest Bathrooms	★	★	★	★	★
Guest Rooms	★	★		★	
Lobby	★	★	★	★	★
Lounges	★	★	★	★	★
Office/Admin/Conf. Room	★	★	★	★	★
Parking Garage Walkway/ Elevator (exterior)					★
Poolside (interior/exterior)					★
Ramp (interior/exterior)					★
Restaurant (dining area)/Bar	★	★	★	★	★
Stairway/Landing (interior/ exterior)					★
Storage/Utility Room	★	★	★	★	★
Vending Area	★	★	★	★	★

★ Recommended

Recommended Product Applications



Retail

	Mature Select	HVT I & HVT II	Piesta	Lightwood / Kareina Asento	Pathways/Stair Treads
Automobile Showroom	★	★	★	★	★
Cafeteria/Dining/Break Area	★	★	★	★	★
Checkout	★	★	★	★	★
Drug Store	★	★	★	★	★
Entryway/Foyer	★	★	★	★	★
Fast Food Counter (Front)	★	★	★	★	★
Indoor Mall Common Area	★	★	★	★	★
Laundromat	★	★	★	★	★
Lavatory	★	★	★	★	★
Office/Admin/Conf. Room	★	★	★	★	★
Parking Garage Walkway/ Elevator (exterior)					★
Pet Shop	★	★	★	★	★
Ramp (interior/exterior)					★
Sales Floor-Department Store	★	★	★	★	★
Sales Floor-Grocery	★	★	★	★	★
Sales Floor-Grocery Produce Area (wet)					★
Sales Floor-Mass Merchandiser	★	★	★	★	★
Specialty Shop/Boutique	★	★	★	★	★
Stairway/Landing (interior/ exterior)					★



Office

	Mature Select	HVT I & HVT II	Lightwood / Kareina Asento	Piesta	Pathways/Stair Treads
Break Area/Vending Area	★	★	★	★	★
Cafeteria/Dining Area	★	★	★	★	★
Corridor (exterior)					★
Corridor (interior)	★	★	★	★	★
Elevator	★	★	★	★	★
Entryway/Foyer	★	★	★	★	★
Lavatory	★	★	★	★	★
Lobby	★	★	★	★	★
Office/Admin/Conf. Room	★	★	★	★	★
Parking Garage Walkway/ Elevator (exterior)					★
Ramp (interior/exterior)					★
Stairway/Landing (interior/ exterior)					★
Storage/Utility Room	★	★	★	★	★



Education

	Mature Select	HVT I & HVT II	Lightwood / Kareina Asento	Piesta	Pathways/Stair Treads
Auditorium	★	★	★	★	★
Cafeteria/Dining/Break Area	★	★	★	★	★
Classroom	★	★	★	★	★
Corridor (exterior)					★
Corridor (interior)	★	★	★	★	★
Dormitory Common Area	★	★	★	★	★
Dormitory Room	★	★	★	★	
Elevator	★	★	★	★	★
Entryway/Foyer	★	★	★	★	★
Laboratory	★	★	★	★	
Lavatory	★	★	★	★	★
Library	★	★	★	★	★
Locker Room (no metal spikes)					★
Multipurpose/Cafeteria		★	★	★	★
Nurses Office/Infirmery	★	★		★	★
Office/Admin/Conf. Room	★	★	★	★	★
Parking Garage Walkway/ Elevator (exterior)					★
Poolside (interior/exterior)					★
Ramp (interior/exterior)					★
Stairway/Landing (interior/ exterior)					★
Storage/Utility Room	★	★	★	★	★
Teacher's Lounge	★	★	★	★	★



Institutional

	Mature Select	HVT I & HVT II	Lightwood / Kareina Asento	Piesta	Pathways/Stair Treads
Airport-Baggage Claim		★	★	★	★
Airport-Check In/Security		★	★	★	★
Airport-Gate Area	★	★	★	★	★
Airport-Jet Bridge					★
Airport-Office	★	★	★	★	★
Airport-Retail	★	★	★	★	★
Arena/Stadium (exterior)					★
Arena/Stadium (interior)	★	★	★	★	★
Cafeteria/Dining/Break Area	★	★	★	★	★
Church	★	★	★	★	★
Civic/Convention Center	★	★	★	★	★
Corridor (exterior)					★
Corridor (interior)	★	★	★	★	★
Courthouse	★	★	★	★	★
Funeral Home	★	★	★	★	★
Lavatory	★	★	★	★	★
Library	★	★	★	★	★
Museum	★	★	★	★	★
Office/Admin/Conf. Room	★	★	★	★	★
Parking Garage Walkway/ Elevator (exterior)					★
Poolside (interior/exterior)					★
Prison	★	★	★	★	★
Ramp (interior/exterior)					★
Stairway/Landing (interior/ exterior)					★
Storage/Utility Room	★	★	★	★	★
Water Park					★

★ Recommended

Resistance to Staining & Chemicals per ASTM F 925

Agent	Surface Dulling				Surface Attack				Color Change			
	Mature Select	Kareina Asento	Homogeneous Vinyl Tile	Pathways / Stair Treads	Mature Select	Kareina Asento	Homogeneous Vinyl Tile	Pathways / Stair Treads	Mature Select	Kareina Asento	Homogeneous Vinyl Tile	Pathways / Stair Treads
Acetic Acid - 5%	0	0	0	0	0	0	0	0	0	0	0	0
Acetic Acid - 28%	0	0	0	0	0	0	0	0	0	0	0	0
Ammonia - 5%	0	0	0	0	0	0	0	0	0	0	0	0
Ammonium Hydroxide - 10%	0	0	0	0	0	0	0	0	0	0	0	0
Ammonium Hydroxide - 30%	0	0	0	0	0	0	0	0	0	0	0	0
Aniline Blue - 2.5%	0	0	0	0	0	0	0	0	1	0	3	2
Bleach - 5%	0	0	0	0	0	0	0	0	0	0	0	0
Dialysis Solution	0	0	0	0	0	0	0	0	0	3	0	0
Ethyl (Denatured) Alcohol	0	0	0	0	0	0	0	0	0	0	0	0
Formaldehyde - 37%	0	0	0	0	0	0	0	0	0	0	0	0
Giesma Blood Stain	0	0	0	0	0	0	0	0	3	3	3	3
Hand Sanitizer (Alcohol Based)	0	0	0	0	0	0	0	0	0	0	0	0
Hema 3 Solution	0	0	0	0	0	0	0	0	0	0	0	0
Hydrochloric Acid - 5%	0	0	0	0	0	0	0	0	0	0	0	0
Hydrochloric Acid - 38%	0	0	0	0	0	0	0	0	0	0	0	0
Hydrogen Peroxide - 30%	0	0	0	0	0	0	0	0	0	0	0	0
Kerosene	0	0	0	0	0	0	0	0	0	0	0	0
Mineral Oil	0	0	0	0	0	0	0	0	0	0	0	0
Olive Oil	0	0	0	0	0	0	0	0	0	1	0	0
Phenol - 5%	0	0	0	0	0	0	0	0	0	1	1	0
Phenolic Disinfectant Cleaner	0	0	0	0	0	0	0	0	0	1	0	2
Potassium Hydroxide - 15%	0	0	0	0	0	0	0	0	0	0	0	0
Quaternary Disinfectant Cleaner	0	0	0	0	0	0	0	0	0	1	0	0
Rubbing Alcohol (5% Isopropyl)	0	0	0	0	0	0	0	0	0	0	0	0
Sodium Hydroxide - 5%	0	0	0	0	0	0	0	0	0	0	0	0
Sodium Hydroxide - 15%	0	0	0	0	0	0	0	0	0	0	0	0
Sodium Hydroxide - 50%	0	0	0	0	0	0	0	0	0	0	0	0
Sulfuric Acid - 5%	0	0	0	0	0	0	0	0	0	0	1	0
Turpentine	0	0	0	0	0	0	0	0	0	0	0	0
Unleaded Gasoline (Regular Grade)	0	0	0	0	0	0	0	0	0	0	0	3
Uric Acid	0	0	0	0	0	0	0	0	0	1	0	0

0 - No Change

1 - Slight Change

2 - Moderate Change

3 - Severe Change

Notes:

According to ASTM, the F925 test method is subjective and test results are nonnumeric;
 This test is not a stain test - it is intended to determine the effect specific chemicals (or agents) will have on the surface of the flooring;
 The flooring product is tested without any applied sealers or floor finishes;
 For the most accurate results, CBC America recommends using the customer's chemicals on actual product samples that have been treated with the maintenance products to be used on the finished floor;
 Flooring sample material for testing is readily available from CBC America;
 For more detailed information, please contact CBC America.

Test Performance

ASTM F 1066 Standard Spec for Vinyl Composition Floor Tile	Meets or Exceeds Requirements
ASTM F 925 Chemical Resistance	Passes
ASTM F 970 (Modified) Static Load Limit	1,000 PSI
ASTM C 1028 Static Coefficient of Friction	≥0.6 ADA Compliant
ASTM F 2199 Dimensional Stability	Passes
ASTM F 1265 Resistance to Impact	Passes
ASTM F 1304 Deflection of Tile	Passes
ASTM F 1514 Resistance to Heat	Passes
CA 01350 VOC Emissions	Passes FloorScore Certified FS-03026 HPDs currently available for FasolPlus & Linotesta

Product Characteristics

Standard Spec	ASTM F 1066
Classification	Class II
Nominal Dimensions	17.7" x 17.7" (450mm x 450mm)
Overall Thickness	3.0mm (0.120")
Packaging	30.5 SF per Carton (14 pieces)

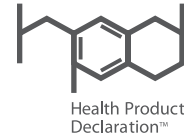
Fire

ASTM E 648 Critical Radiant Flux	Class 1 (>0.45/sq cm)
ASTM E 662 Smoke Generation	<450 Flaming & Non-Flaming

CBC Flooring is ISO 9001 and 14001 certified

Warranty

TOLI HVT is covered by a limited 10-year warranty.
Visit our website, www.cbcflooring.com for complete details.

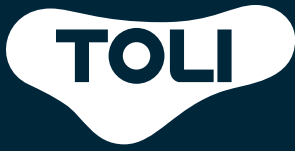


USGBC-LEED Credits

Product	Materials & Resources					Indoor Environmental Quality		
	MR Credit 1.2: Building Reuse	MR Credit 2: Construction Waste Management	MR Credit 3.1: Material Reuse	Recycled Content Pre-Consumer	Recycled Content Post- Consumer	MR Credit 4: Recycled Content Contribution (Sum of post- consumer + 1/2 pre- consumer)	IEQ Credit 4.1: Low Emitting Materials - Adhesives	IEQ Credit 4.3: Low Emitting Materials - Flooring Systems
TOLI HVT	✓	✓	✓	35.5%	2%	19.8%	✓	✓

(✓) Based on the 2009 LEED rating system and the overall scope of your project TOLI HVT may contribute to your LEED scorecard.

GET SAMPLES FAST 919-230-8700 cbcflooring.com
Questions? Give us a call, we're ready to help you create your next great space.



Exclusively from
CBC Flooring

TOLI Homogeneous Vinyl Tile

FASOLPLUS + LINOTESTA + VIALE



**COMMERCIAL
TILE FLOORING**



CERTIFIED BY
SCS Global Services



CBC Flooring is committed to advance sustainability

by marketing the finest flooring products from around the globe. Our EcoVision™ Policy supports environmental responsibility for the world we all share. We strive to reduce waste, limit the consumption of natural resources and preserve Earth's environment for future generations.

**For more information and sample requests,
contact CBC Flooring:**

919-230-8700

www.cbcflooring.com