

Product Characteristics

Standard Spec	ASTM 1066
Classification	Class II
Nominal Dimensions	17.7" x 17.7" (450mm x 450mm)
Overall Thickness	3.0mm (0.120")
Wear Layer Thickness	120 mils
Packaging	30.5 SF per Carton (14 pcs)
Recycled Contents	
Pre-Consumer	35.5%
Post-Consumer	2.0%
MR Credit 4.1	19.8% (Sum of Post-Consumer + 1/2 Pre-Consumer)
Warranty	Terraline is covered by a limited 10-year warranty. Visit our website, www.cbcflooring.com , for complete details.

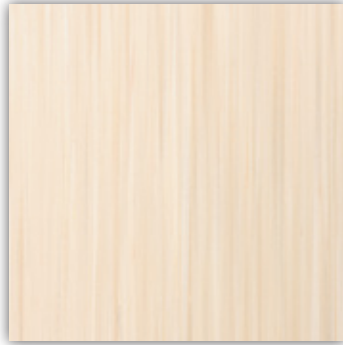


Test Performance

	Characteristic	Test Method	Requirement	Performance
	Thickness	ASTM F386	± 0.005", as specified	Passes.
	Size	ASTM F2055	± 0.016" per linear foot	Passes. (TOLI's internal tolerance of ±0.008"/LF is 2X tighter than requirement)
	Squareness	ASTM F2055	0.010" max	Passes.
ASTM F1066	Resistance to Heat	ASTM F1514	ΔE ≤ 8.0	Passes. (ΔE ≤ 1.0 as tested)
	Chemical Resistance	ASTM F925	No more than slight change in surface dulling, surface attack, or staining.	Passes.
	Deflection	ASTM F1304	1.0" minimum	Passes. (≥ 2.0" as tested)
	Dimensional Stability	ASTM F2199	0.024" per linear foot, maximum	Passes.
	Impact	ASTM F1265	No cracks beyond limit	Passes.
	Indentation-one minute	ASTM F1914	0.006"-0.015"	Passes. (0.006"-0.008" as tested)
	Indentation-ten minutes	ASTM F1914	0.0100"-0.0209" (based on one minute result)	Passes. (0.010"-0.013" as tested)
	Indentation-at 115°F	ASTM F1914	< 0.032"	Passes. (0.022"-0.026" as tested)
Additional Tests	Static Load Limit	ASTM F970 (Modified)	≤ 0.005"	> 1,000 PSI. (0.002" as tested)
	Static Coefficient of Friction	ASTM D2047	≥ 0.5	ADA Compliant
	Wear Layer Thickness	ASTM F410	No requirement	0.120" (120 mils)
	Critical Radiant Flux	ASTM E648	0.45 W/cm ² or more-Class I	Class I (> 0.45 W/cm ²)
	Smoke Generation	ASTM E662	450 or less	<450 (Flaming and Non-flaming)
	Resistance to Light	ASTM F1515	ΔE ≤ 8.0	Passes. (ΔE ≤ 2.0 as tested)
	VOC Emissions	CA 01350	TVOC ≤ 0.5 mg/m ³	Passes. FloorScore Certified FS-03026



7001 Alabaster



7002 Sandstone



7004 Citrine



7003 Limestone



7008 Desert



7005 Amber



7007 Ash



7009 Smoke



7006 Loam