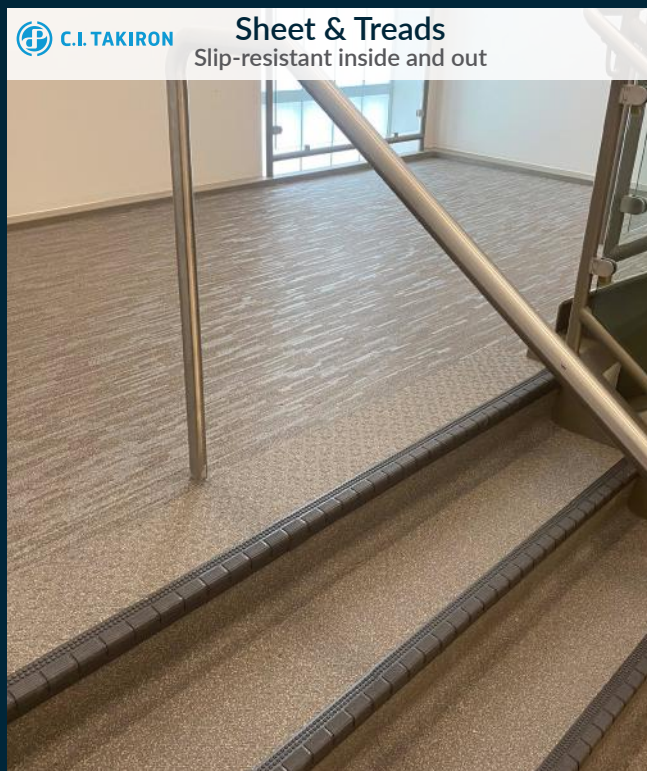
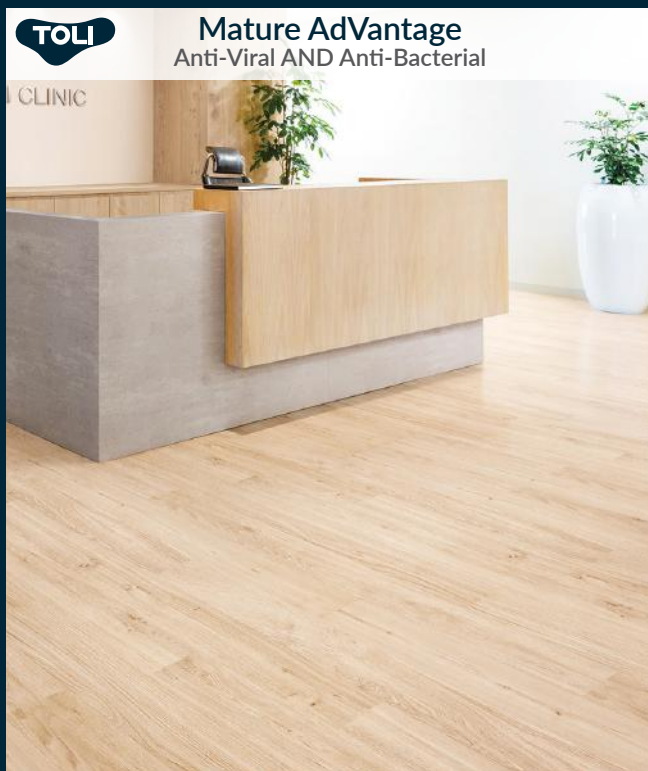


CBC® Flooring



C.I. TAKIRON



(919) 230-8700

www.cbcflooring.com

Table of Contents

Application Chart	<u>3</u>
Coordination Story	<u>5</u>
TOLI Mature AdVantage	<u>6</u>
TOLI Homogeneous Vinyl Tile	<u>16</u>
Linotesta / FasolPlus	<u>19</u>
Viale	<u>22</u>
Terraline	<u>23</u>
Strataline	<u>24</u>
Kolurpath	<u>25</u>
Arborpath	<u>26</u>
TOLI Piesta	<u>28</u>
TOLI Kareina Asento	<u>34</u>
TOLI Lightwood	<u>44</u>
C.I. Takiron Pathways / Nattice / Stair Treads	<u>50</u>
Pathways	<u>51</u>
Nattice	<u>55</u>
Stair Treads	<u>57</u>
Resistance to Chemicals	<u>62</u>
Adhesive Reference Table	<u>63</u>
LEED Chart	<u>64</u>

Product Application

Recommendations

The following application chart is provided to aid in understanding where our flooring products are recommended for use. This application chart is a subjective recommendation and is predicated upon the adherence to proper installation techniques; specific location of installation; level of foot traffic; and the type and professional level of maintenance practiced on-site. As there is a wide range of variables within an environment and the characteristics of each application may vary significantly, please consult with your CBC® Flooring sales representative to determine which CBC Flooring product is appropriate for your installation.



Hospital

	Mature® AdVantage	Homogeneous Vinyl Tile	Piستا	Lightwood® / Kareina Asento®	Nattice® / Pathways / Stair Treads
Cafeterias/Dining/Break Area	★	★	★	★	★
Chapel, Worship Center	★	★	★	★	★
Corridor (exterior)					★
Corridor (interior)	★	★	★	★	★
Dialysis	★	★	★	★	
Elevator	★	★	★	★	★
Emergency Department	★	★	★	★	
Exam/Prep Room	★	★	★	★	
Gift Shop	★	★	★	★	★
Hydrotherapy Room	★				★
Hyperbaric Room	★	★	★	★	★
Intensive Care	★	★	★	★	
Labor Delivery Room	★	★	★	★	
Laboratory	★	★	★	★	
Lavatory	★	★	★	★	★
Lobby	★	★	★	★	★
Neonatal Intensive Care	★	★	★	★	
Nurse's Station	★	★	★	★	
Office/Admin/Conf. Room	★	★	★	★	★
Operating Room (Outpatient)	★	★		★	
Parking Garage Walkway/ Elevator (exterior)					★
Patient Room	★	★	★	★	
Pharmacy	★	★	★	★	★
Physical Therapy	★	★	★	★	★
Ramp (interior/exterior)					★
Scrub Area	★				★
Shower Area/Room					★
Staff Lounge	★	★	★	★	★
Stairway/Landing (interior/ exterior)					★
Storage/Utility Room	★	★	★	★	★
Waiting Room	★	★	★	★	★



Assisted Living

	Mature® AdVantage	Homogeneous Vinyl Tile	Lightwood® / Kareina Asento	Piستا	Nattice® / Pathways / Stair Treads
Activity Room/Common Area	★	★	★	★	★
Beauty Salon/Barber Shop	★	★	★	★	★
Cafeteria/Dining/Break Area	★	★	★	★	★
Corridor (exterior)					★
Corridor (interior)	★	★	★	★	★
Doctor/Dentist Area	★	★	★	★	★
Elevator	★	★	★	★	★
Lobby	★	★	★	★	★
Office/Admin/Conf. Room	★	★	★	★	★
Pharmacy	★	★	★	★	★
Poolside (interior/exterior)					★
Ramp (interior/exterior)					★
Residence Bathroom	★	★	★	★	★
Residence Kitchen	★	★	★	★	★
Residence Room	★	★	★	★	
Shower Area/Room					★
Staff Lounge	★	★	★	★	★
Stairway/Landing (interior/ exterior)					★
Storage/Utility Room	★	★	★	★	★



Hospitality

	Mature® AdVantage	Homogeneous Vinyl Tile	Lightwood® / Kareina Asento	Piستا	Nattice® / Pathways / Stair Treads
Balcony/Deck					★
Cafeteria/Dining/Break Area	★	★	★	★	★
Corridor (exterior)					★
Corridor (interior)	★	★	★	★	★
Dance Floor	★			★	
Elevators	★	★	★	★	★
Exercise Rooms	★	★		★	★
Guest Bathrooms	★	★	★	★	★
Guest Rooms	★	★		★	
Lobby	★	★	★	★	★
Lounges	★	★	★	★	★
Office/Admin/Conf. Room	★	★	★	★	★
Parking Garage Walkway/ Elevator (exterior)					★
Poolside (interior/exterior)					★
Ramp (interior/exterior)					★
Restaurant (dining area)/Bar	★	★	★	★	★
Stairway/Landing (interior/ exterior)					★
Storage/Utility Room	★	★	★	★	★
Vending Area	★	★	★	★	★

★ Recommended

Product Application

Recommendations



Retail

	Mature® AdVantage	Homogeneous Vinyl Tile	Piesta	Lightwood® / Kareina Asento®	Nattice® / Pathways / Stair Tre ads
Automobile Showroom	★	★	★	★	★
Cafeteria/Dining/Break Area	★	★	★	★	★
Checkout	★	★	★	★	★
Drug Store	★	★	★	★	★
Entryway/Foyer	★	★	★	★	★
Fast Food Counter (Front)	★	★	★	★	★
Indoor Mall Common Area	★	★	★	★	★
Laundromat	★	★	★	★	★
Lavatory	★	★	★	★	★
Office/Admin/Conf. Room	★	★	★	★	★
Parking Garage Walkway/ Elevator (exterior)					★
Pet Shop	★	★	★	★	★
Ramp (interior/exterior)					★
Sales Floor-Department Store	★	★	★	★	★
Sales Floor-Grocery	★	★	★	★	★
Sales Floor-Grocery Produce Area (wet)					★
Sales Floor-Mass Merchandise	★	★	★	★	★
Specialty Shop/Boutique	★	★	★	★	★
Stairway/Landing (interior/ exterior)					★



Office

	Mature® AdVantage	Homogeneous Vinyl Tile	Piesta	Lightwood® / Kareina Asento®	Nattice® / Pathways / Stair Tre ads
Break Area/Vending Area	★	★	★	★	★
Cafeteria/Dining Area	★	★	★	★	★
Corridor (exterior)					★
Corridor (interior)	★	★	★	★	★
Elevator	★	★	★	★	★
Entryway/Foyer	★	★	★	★	★
Lavatory	★	★	★	★	★
Lobby	★	★	★	★	★
Office/Admin/Conf. Room	★	★	★	★	★
Parking Garage Walkway/ Elevator (exterior)					★
Ramp (interior/exterior)					★
Stairway/Landing (interior/ exterior)					★
Storage/Utility Room	★	★	★	★	★



Education

	Mature® AdVantage	Homogeneous Vinyl Tile	Piesta	Lightwood® / Kareina Asento®	Nattice® / Pathways / Stair Tre ads
Auditorium	★	★	★	★	★
Cafeteria/Dining/Break Area	★	★	★	★	★
Classroom	★	★	★	★	★
Corridor (exterior)					★
Corridor (interior)	★	★	★	★	★
Dormitory Common Area	★	★	★	★	★
Dormitory Room	★	★	★	★	
Elevator	★	★	★	★	★
Entryway/Foyer	★	★	★	★	★
Laboratory	★	★	★	★	
Lavatory	★	★	★	★	★
Library	★	★	★	★	★
Locker Room (no metal spikes)					★
Multipurpose/Cafeteria		★	★	★	★
Nurses Office/Infirmary	★	★		★	★
Office/Admin/Conf. Room	★	★	★	★	★
Parking Garage Walkway/ Elevator (exterior)					★
Poolside (interior/exterior)					★
Ramp (interior/exterior)					★
Shower Area/Room					★
Stairway/Landing (interior/ exterior)					★
Storage/Utility Room	★	★	★	★	★
Teacher's Lounge	★	★	★	★	★



Institutional

	Mature® AdVantage	Homogeneous Vinyl Tile	Piesta	Lightwood® / Kareina Asento®	Nattice® / Pathways / Stair Tre ads
Airport-Baggage Claim		★	★	★	★
Airport-Check In/Security		★	★	★	★
Airport-Gate Area	★	★	★	★	★
Airport-Jet Bridge					★
Airport-Office	★	★	★	★	★
Airport-Retail	★	★	★	★	★
Arena/Stadium (exterior)					★
Arena/Stadium (interior)	★	★	★	★	★
Cafeteria/Dining/Break Area	★	★	★	★	★
Church	★	★	★	★	★
Civic/Convention Center	★	★	★	★	★
Corridor (exterior)					★
Corridor (interior)	★	★	★	★	★
Courthouse	★	★	★	★	★
Funeral Home	★	★	★	★	★
Lavatory	★	★	★	★	★
Library	★	★	★	★	★
Museum	★	★	★	★	★
Office/Admin/Conf. Room	★	★	★	★	★
Parking Garage Walkway/ Elevator (exterior)					★
Poolside (interior/exterior)					★
Prison	★	★	★	★	★
Ramp (interior/exterior)					★
Stairway/Landing (interior/ exterior)					★
Storage/Utility Room	★	★	★	★	★
Water Park					★

★ Recommended

Note: Takiron products are not recommended in commercial kitchens and immediate adjacent areas.

Our Coordination Story

By its very definition, coordination involves items working together to achieve effective results. And, at CBC, we have taken the term to another level. With products designed to coordinate across lines, we assist you in choosing the proper product for your application without compromise. Just think of it as being able to choose the right visual without having to sacrifice performance. Or, as we like to say, “we let you have your cake and eat it too!” Enjoy!

Mature AdVantage 3001



FasolPlus -2072

Kareina Asento -7054

Mature AdVantage 3070



FasolPlus -2010

Kareina Asento -7022

Mature AdVantage 3084

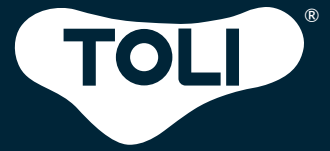


Linotesta -510

Kareina Asento -7061

TOLI Coordination

*Allowing for ideal
product selection
while enhancing the
creativity and
continuity of design.*



Exclusively from
CBC Flooring

TOLI Mature® AdVantage

Commercial Sheet with ClearGuard™ Anti-Viral Wear Layer



TOLI Mature® AdVantage

Commercial Sheet with ClearGuard™ Anti-Viral Wear Layer

Mature AdVantage is the industry's leading anti-viral AND anti-bacterial commercial sheet flooring making it the perfect solution for healthcare, assisted living, education and any other application requiring extra protection without sacrificing visual beauty.

Mature AdVantage print film is produced to exacting Japanese standards to deliver unmatched detail and realism. Our low-profile embossing and our unique ClearGuard™ wear layer combine to deliver a hygienic and attractive flooring solution that stands up to high-traffic environments for decades without the use of waxes or polishes.

When you step into a space, it's the experience that matters. When you're choosing the flooring to complete that space, experience matters even more. Celebrating over 100 years, TOLI has been the premier manufacturer of the world's most innovative floor coverings.

Trust the experience™. Trust TOLI.

 **GET SAMPLES FAST 919-230-8700 www.cbcflooring.com**

Questions? Give us a call, we're ready to help you create your next great space.

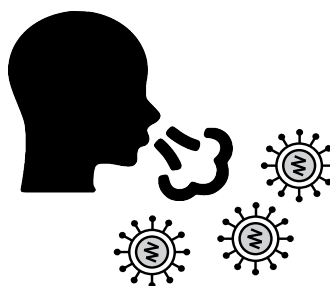
How It Works

Flooring surface is exposed to viruses (via coughing, sneezing, shoe soles, etc.)

Mature AdVantage's permanent anti-viral properties are integrated into the upper-most portion of its ClearGuard wear layer and chemically bond with the viruses.

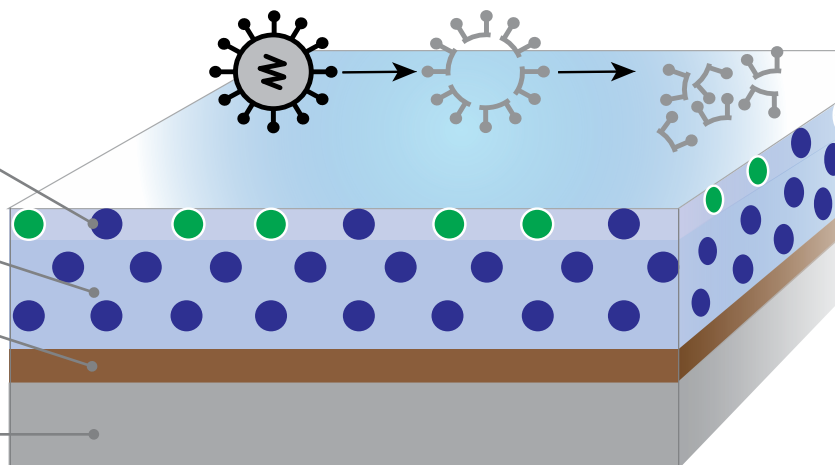
By degenerating or degrading the structure of the virus (including its membranes and shells), the viruses are destroyed.

Harmless fragments are eliminated through routine maintenance.

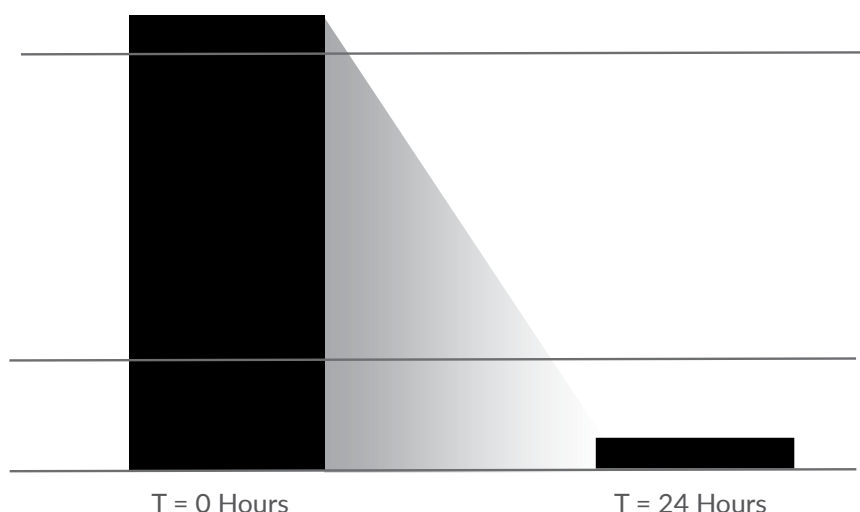


The Construction

- Layer 1 Clear UV coating. Anti-viral and anti-bacterial.
- Layer 2 Additional wear layer providing added durability and a second line of defense against stains.
- Layer 3 The industry's highest quality print film.
- Layer 4 Embossed, compressed backing with fiberglass reinforcement to resist tears and gouging and allow better adhesion.



Reduces Plaque-Forming Units (PFUs) by over 99% in 24 Hours
(per ISO21702)



SIAA

ISO 21702

Anti Virus

Organic/inorganic materials
infused into UV layer
JP0612352A0001V

- Reduces the number of specific viruses on the product by 99% or more.
- SIAA marking indicates products that have been quality-controlled and disclosed such information in accordance to the guidelines of the Society of International sustaining growth for Antimicrobial Articles based on the results evaluated by ISO21702.
- Complies with SIAA safety standards.
- Antiviral processing is not intended for the treatment or prevention of illnesses.

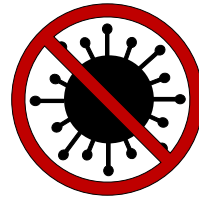
SIAA Reg. #: JP0612352A0001V

Images and graphics not to scale

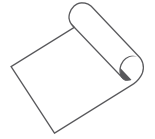


3031

Blanco Terra



ANTI-VIRAL



COMMERCIAL
SHEET FLOORING



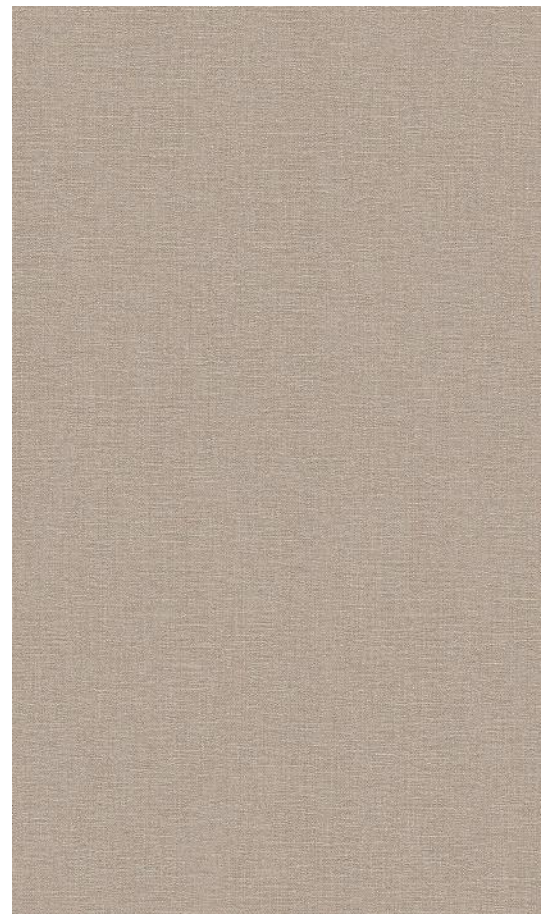
3048

Light Chalked Oak



3038

Light Aged Oak



3078

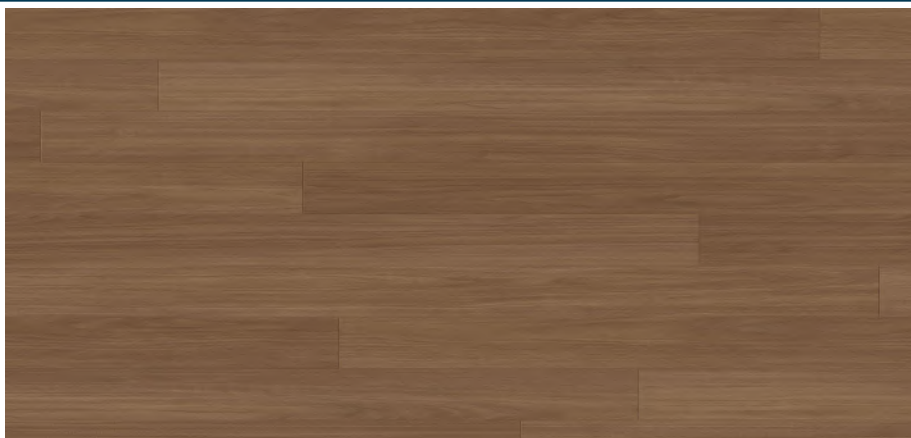
Beige Micro Tweed

Click on swatches to order samples or to get more information.

The product colors you see are as accurate as current photography and printing techniques allow. We recommend viewing actual product samples before final color selection.



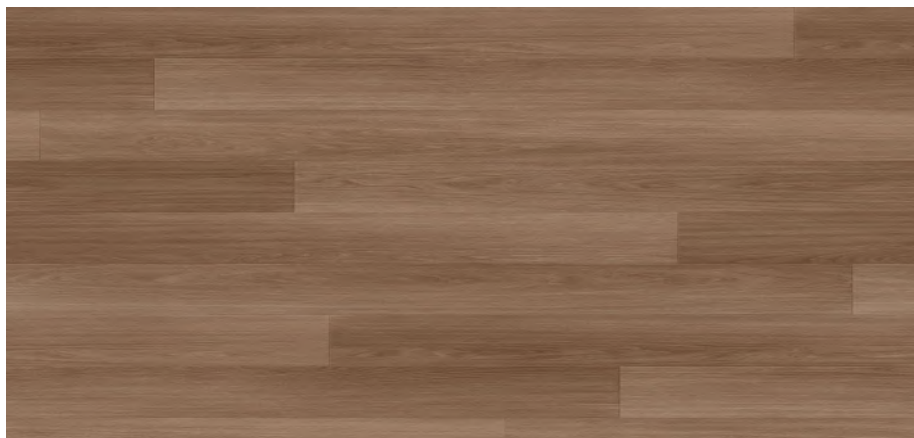
4064 Buff Velvet Travertine



4027 Cappuccino Satin Walnut



3039 Warm Aged Oak



4001 Hemp Silken Oak



3047 Bronze Antique Oak



3029 Beige Stone Cloud

Click on swatches to order samples or to get more information.

The product colors you see are as accurate as current photography and printing techniques allow. We recommend viewing actual product samples before final color selection.



4049 Dune Shiroy Marble



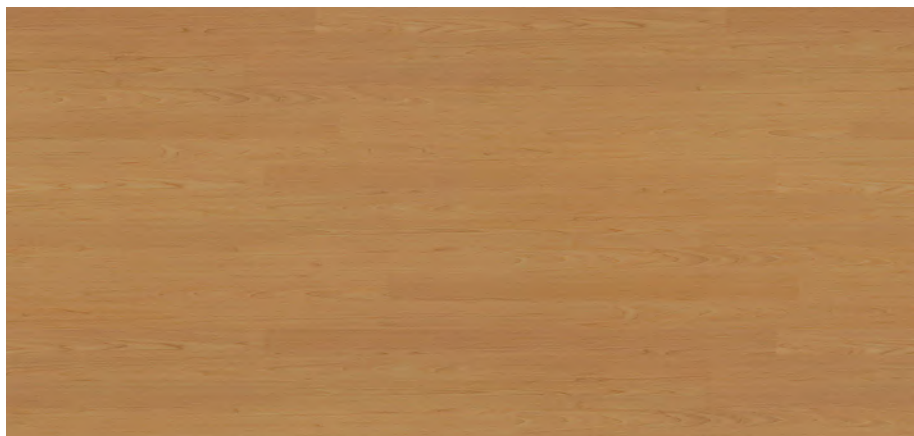
3070 Natural Japanese Cypress



3054 Natural Miller's Oak



771 Light Vermont Maple



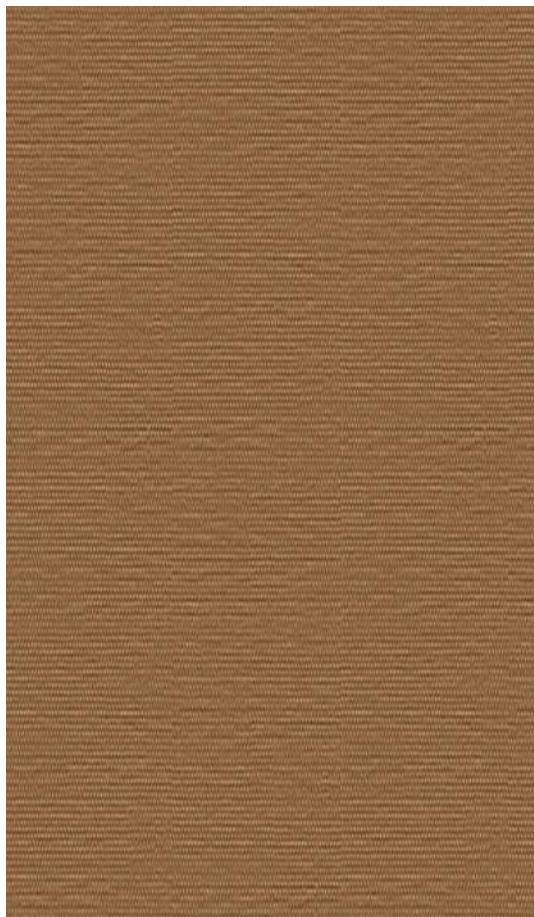
741 Natural Maple



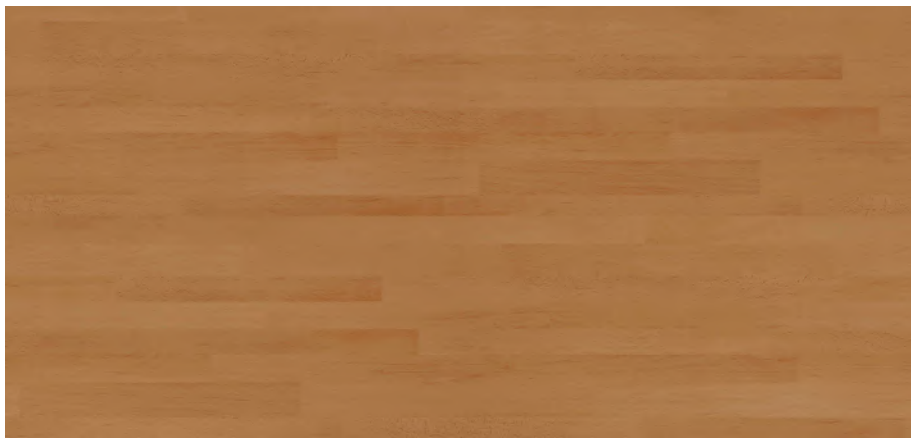
3083 Jute Linen

[Click on swatches to order samples or to get more information.](#)

The product colors you see are as accurate as current photography and printing techniques allow. We recommend viewing actual product samples before final color selection.



3084 Nutmeg Linen



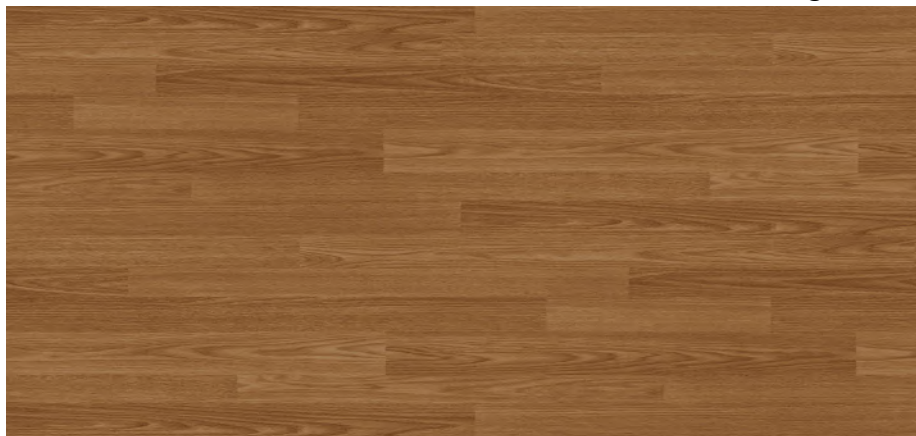
762 Stained Beechwood



471 Honey Oak



451 Light Oak



452 Red Oak



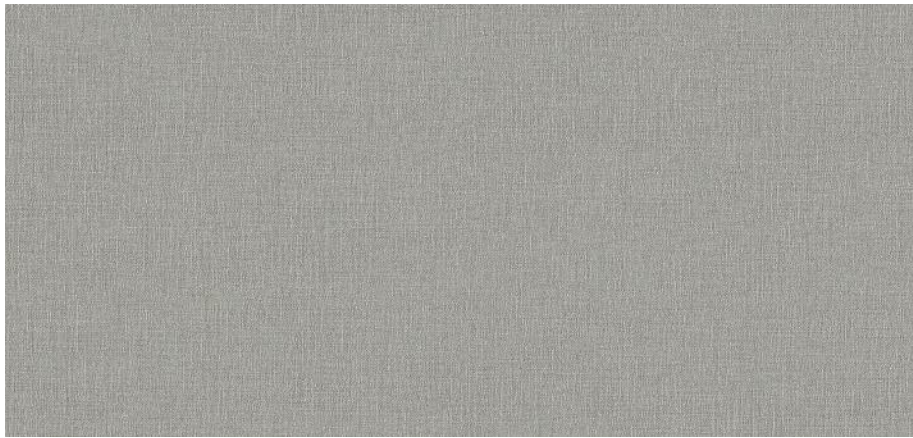
3032 Naran Terra



4002 Shade Homestead Oak



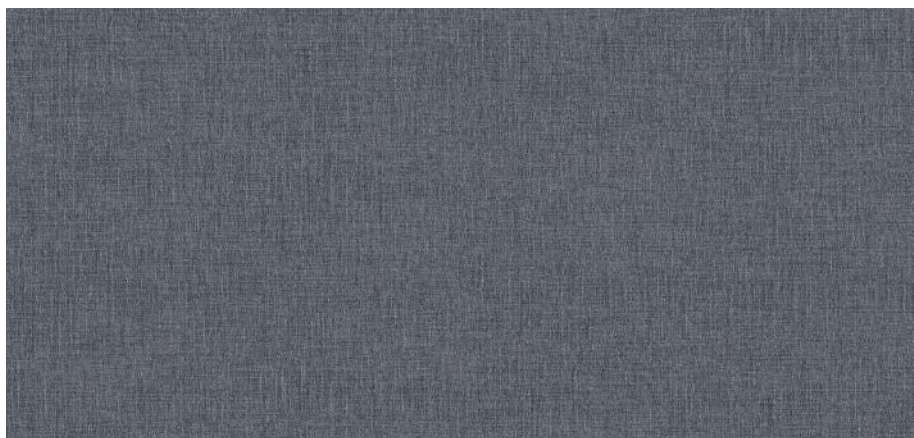
3027 Dove Stone Cloud



3076 Gray Micro Tweed



3001 Dusk Mortar



4072 Denim Micro Tweed



4008 Ashen Herringbone

Click on swatches to order samples or to get more information.

The product colors you see are as accurate as current photography and printing techniques allow. We recommend viewing actual product samples before final color selection.



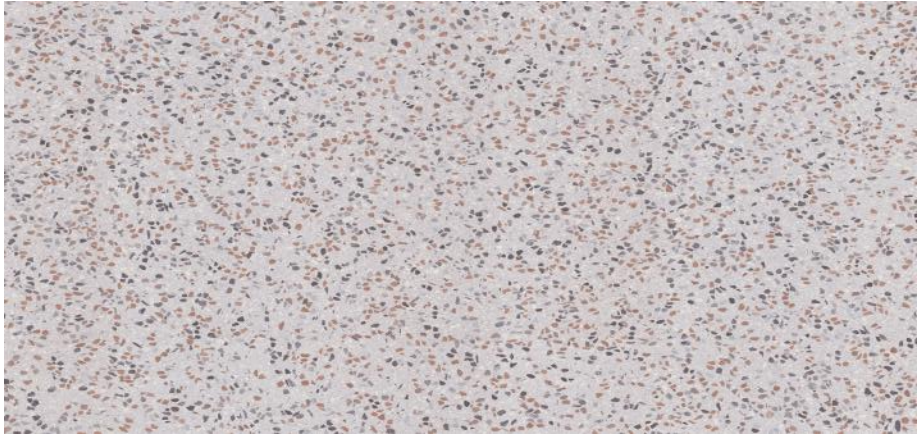
773 Deep Vermont Maple



4029 Autumn Chandler Walnut



531 Light Brazilian Cherry



4053 Fiore Terrazzo



772 Classic Vermont Maple



4028 Sunset Kelley Walnut



3063 Rising Walnut

Click on swatches to order samples or to get more information.

The product colors you see are as accurate as current photography and printing techniques allow. We recommend viewing actual product samples before final color selection.


Mature AdVantage

Product Characteristics

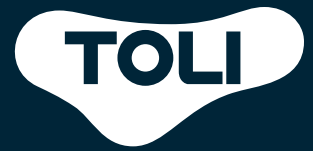
Standard Spec	ASTM 1303
Classification	Type I Grade 1
Backing Class	Class B
Nominal Dimensions	6' Wide x 66' Long (1828mm x 20m)
Roll Size	44 Square Yards
Overall Thickness	2.0mm (0.080")
Wear Layer Thickness	0.5mm (0.02")
Recycled Contents	
Pre-Consumer	>14.5%
Post-Consumer	>14%
MR Credit 4.1	21.25% (Sum of Post-Consumer + 1/2 Pre-Consumer)
Warranty	Mature AdVantage is covered by a limited 15-year warranty. Visit our website, www.cbcflooring.com , for complete details.



Test Performance

	Characteristic	Test Method	Requirement	Performance
ASTM F1303	Thickness	ASTM F386	$\geq 0.040''$	Passes. (0.080")
	Wear Layer Thickness - Grade 1 (Commercial)	ASTM F410	$\geq 0.020''$	Passes. 0.5mm (0.020") with additional reinforced urethane top coat.
	Wear Layer Composition - Type 1	Certificate of Compliance	$\geq 90\%$ binder	Passes. With embedded anti-viral properties.
	Indentation	ASTM F1914	$\leq 0.012''$	Passes. (0.004" as tested)
	Flexibility	ASTM F137	1/4 mandrel, no cracks or breaks	Passes.
	Chemical Resistance	ASTM F925	No more than slight change in surface dulling, surface attack, or staining.	Passes.
	Resistance to Heat	ASTM F1514	$\Delta E \leq 8.0$	Passes. ($\Delta E \leq 1.0$ as tested)
	Resistance to Light	ASTM F1515	$\Delta E \leq 8.0$	Passes. ($\Delta E \leq 1.0$ as tested)
	Static Load Limit (@175psi)	ASTM F970	$\leq 0.005''$	Passes. (0.001" as tested)
	Static Load Limit (Modified)	ASTM F970	$\leq 0.005''$	500 psi. (0.003" as tested) 750 psi. (0.005" as tested)
Additional Tests	Static Coefficient of Friction	ASTM D2047	≥ 0.5	≥ 0.6 ADA Compliant
	Critical Radiant Flux	ASTM E648	0.45 W/cm ² or more-Class I	Class I (> 0.45 W/cm ²)
	Smoke Generation	ASTM E662	450 or less	<450 (Flaming and Non-flaming)
	VOC Emissions	CA 01350	TVOC ≤ 0.5 mg/m ³	Passes. FloorScore Certified FS-03031
	Anti-Viral	ISO21702		Destroys >99% in 24 hours SIAA Reg. #: JP0612352A0001V

Visit our web site @ www.cbcflooring.com for installation instructions, maintenance procedures and detailed specifications.



Exclusively from
CBC Flooring

TOLI Homogeneous Vinyl Tile

FASOLPLUS® + LINOTESTA® + VIALE® +
TERRALINE® + STRATALINE® + KOLURPATH® + ARBORPATH®



COMMERCIAL
TILE FLOORING

TOLI HVT



A Colorful History and Future.

For years, architects and designers have relied on TOLI's homogeneous vinyl tile for their most demanding projects. Given the wide array of colorways, our extensive line of HVT enhances virtually all commercial settings – especially healthcare, education, retail and corporate.

The allure of these products extends well beyond their color palettes as they were developed to meet the demanding needs of high-traffic commercial interiors. And their through-pattern construction means their beauty is more than skin deep.

Trust the experience. Trust TOLI.

Trust the experience™.

Our colors are vibrant through and through. Literally.

Thanks to through-pattern construction, the color literally runs throughout the entire thickness of every single tile. And that means the rich and bright colors will stand the test of time even in high traffic areas.

Trust the experience. Trust TOLI.



TOLI® Homogeneous Vinyl Tile

- **Factory applied finish** for protection during installation
- **Through-pattern construction** – its 120 mil wear layer (as per ASTM F-410) means that the pattern extends throughout the tile for greater durability and longer life
- **18" x 18" oversized tile** – eliminates 60% of the seams found with standard VCT (Arborpath available in plank only)
- Rich vibrant and saturated colors creating a subtle organic look
- Tiles can be installed in the same direction creating a monolithic, organic appearance
- Easy to water jet or sonic cut for inlaid designs
- Quieter underfoot than standard VCT
- ASTM F 970 – 1,000 PSI compared to standard VCT
- No stripping required after installation

IDEAL FOR HIGH TRAFFIC APPLICATIONS



HEALTHCARE



EDUCATION

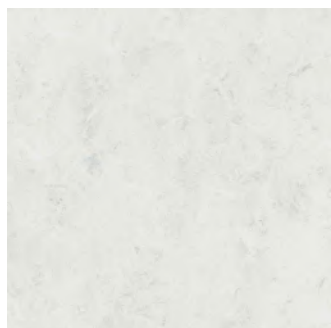


RETAIL

GET SAMPLES FAST 919-230-8700 www.cbcflooring.com

Questions? Give us a call, we're ready to help you create your next great space.

LINOTESTA



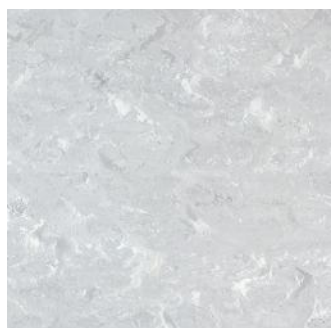
532 Misty



516 Limestone



508 Mushroom



513 Steel



517 Iron



522 Dusty



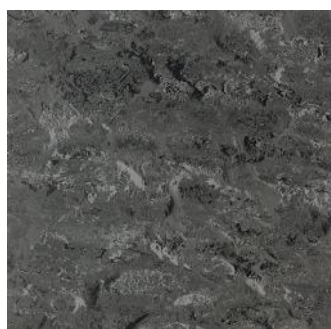
514 Shadow



531 Sage



510 Anise

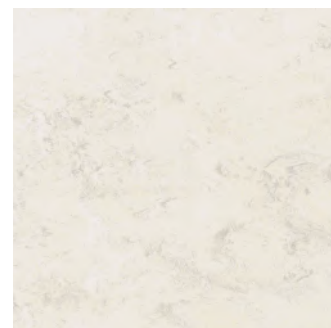


515 Onyx



520 Blue Wave

FASOLPLUS



2007 Cotton



2038 Silver



2041 Gunmetal

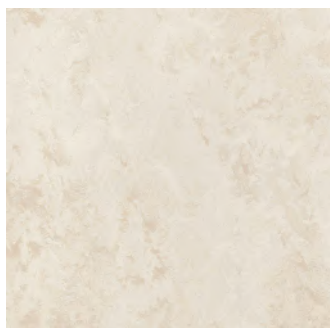


2073 Cove

Click on swatches to order samples or to get more information.

The product colors you see are as accurate as current photography and printing techniques allow. We recommend viewing actual product samples before final color selection.

FASOLPLUS



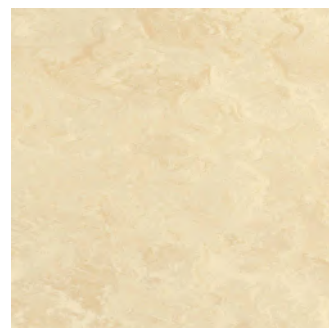
2061 Pebble



2010 Flax



2011 Parchment



2012 Buttermilk



2062 Taupe



2042 Latte



2050 Straw



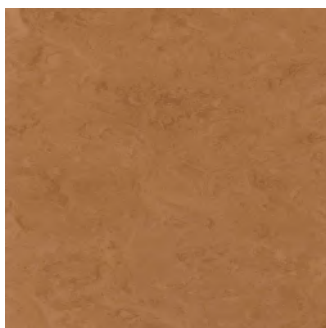
2022 Wheat



2072 Boulder



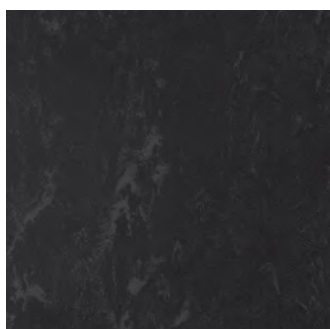
2074 Mineral



2023 Caramel



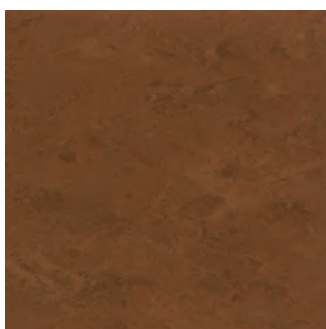
2024 Melon



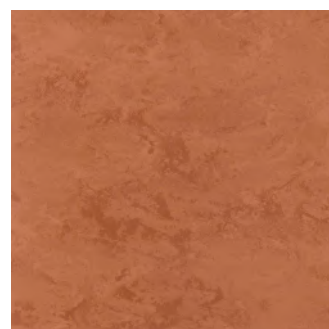
2040 Ebony



2063 Java



2043 Coppertone



2026 Spice

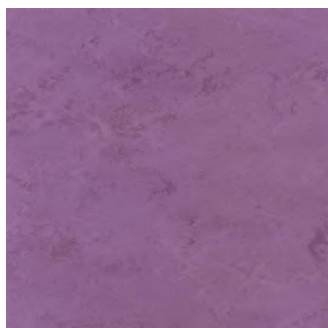
Click on swatches to order samples or to get more information.

The product colors you see are as accurate as current photography and printing techniques allow. We recommend viewing actual product samples before final color selection.

FASOLPLUS



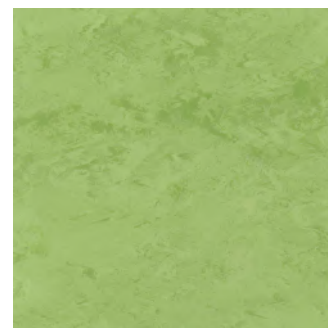
2029 Sunflower



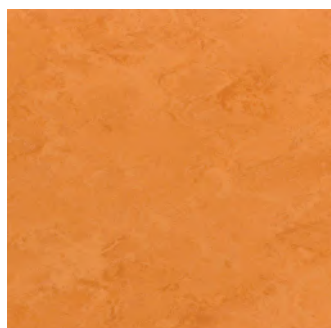
2037 Orchid



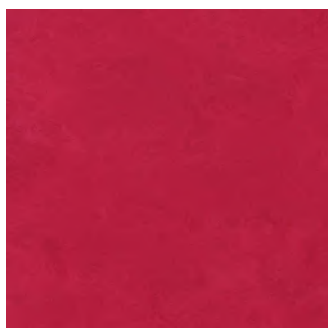
2034 Sky



2031 Spring



2025 Pumpkin



2068 Raspberry



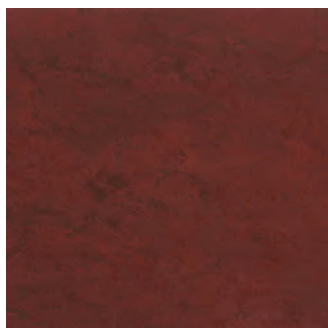
2035 Twilight



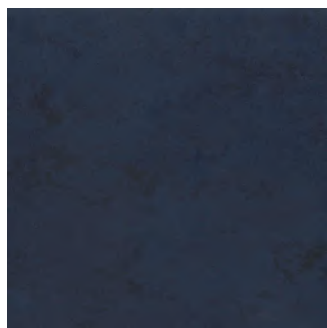
2032 Leaf



2066 Tangerine



2002 Sangria



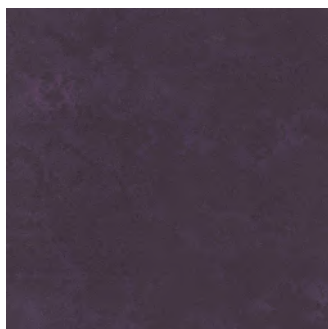
2006 Blueberry



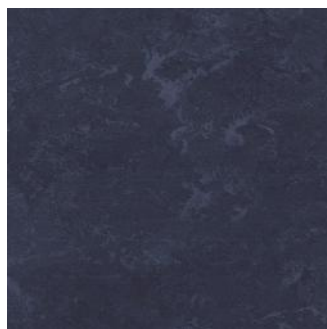
2077 Thicket



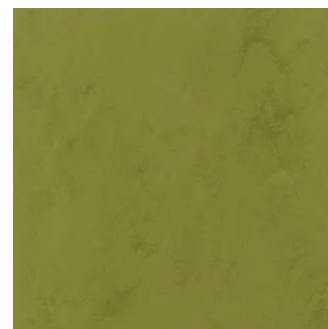
2076 Koi



2071 Grape



2057 Sapphire



2060 Avocado

Click on swatches to order samples or to get more information.

The product colors you see are as accurate as current photography and printing techniques allow. We recommend viewing actual product samples before final color selection.

VIALE



608 Buff



609 Suede



6001 Khaki



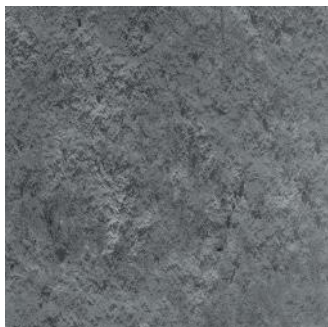
TOLI Linotesta



607 Oyster



653 Fawn



654 Charcoal

TERRALINE



7001 Alabaster



7002 Sandstone



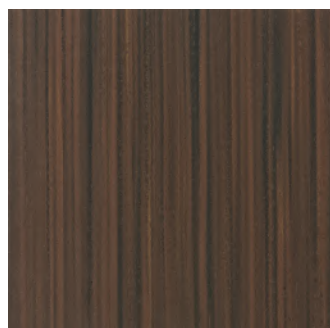
7003 Limestone



7004 Citrine



7005 Amber



7006 Loam



7007 Ash



7008 Desert



7009 Smoke



TOLI Terraline

Click on swatches to order samples or to get more information.

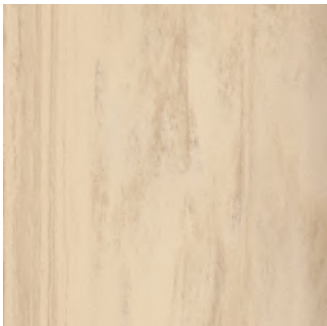
The product colors you see are as accurate as current photography and printing techniques allow. We recommend viewing actual product samples before final color selection.

STRATALINE



5004

Pyrite



5005

Sand



5006

Bedrock



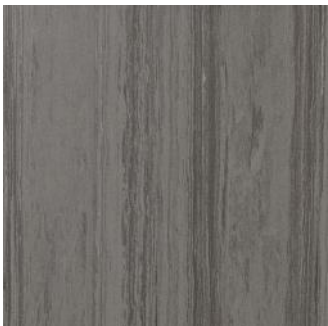
5001

Clay



5002

Quarry



5003

Gravel



TOLI Strataline

Click on swatches to order samples or to get more information.

The product colors you see are as accurate as current photography and printing techniques allow. We recommend viewing actual product samples before final color selection.

KOLURPATH



3001 Jasper



3002 Mercury



3003 Flint



3006 Moonstone



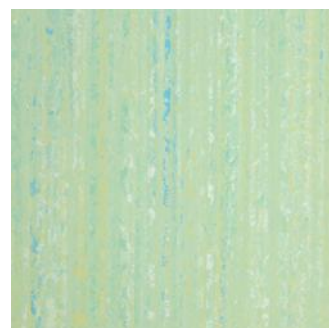
3004 Topaz



3005 Garnet



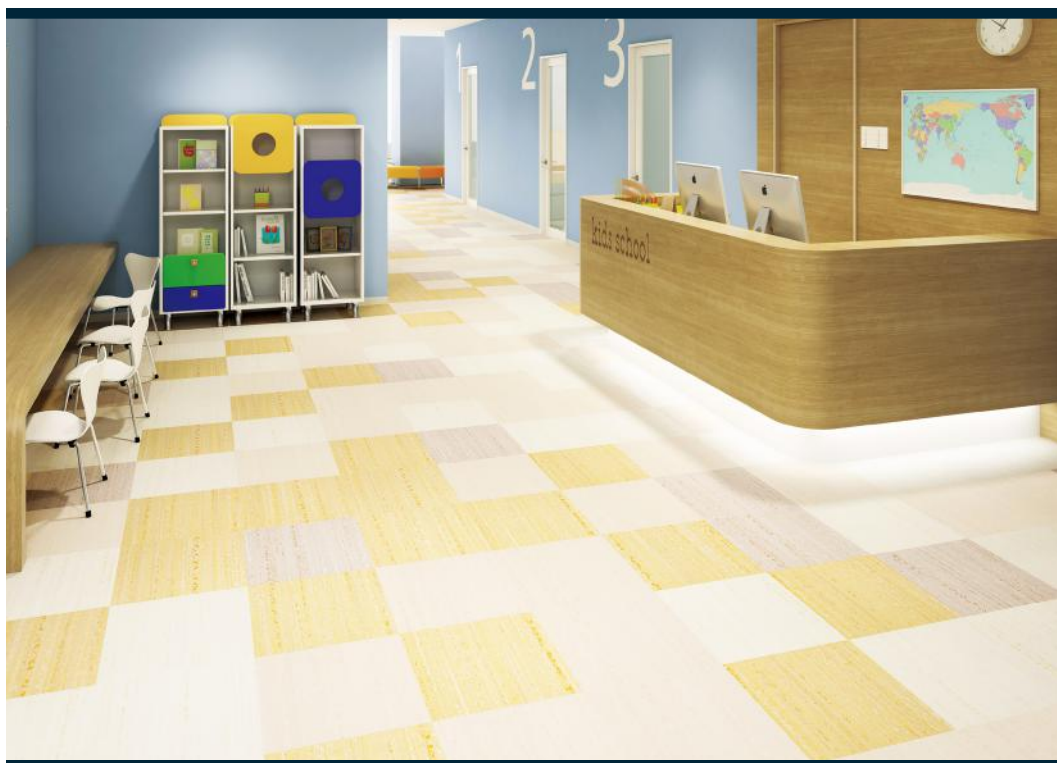
3007 Alexandrite



3008 Peridot



3009 Lapis



TOLI Kolurpath

Click on swatches to order samples or to get more information.

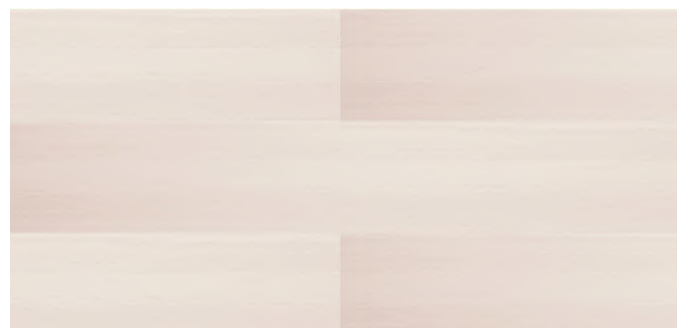
The product colors you see are as accurate as current photography and printing techniques allow. We recommend viewing actual product samples before final color selection.

ARBORPATH



3501

Almond



3506

Bisque



3502

Macadamia

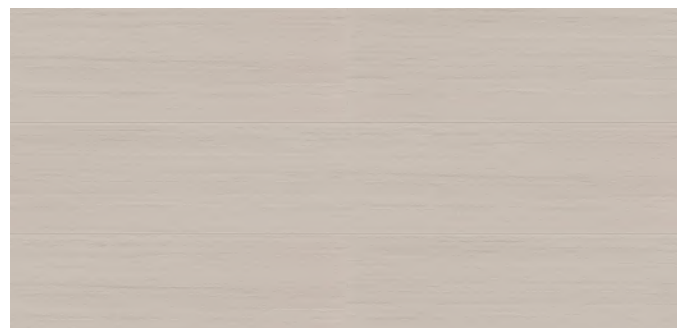


3507

Ginger

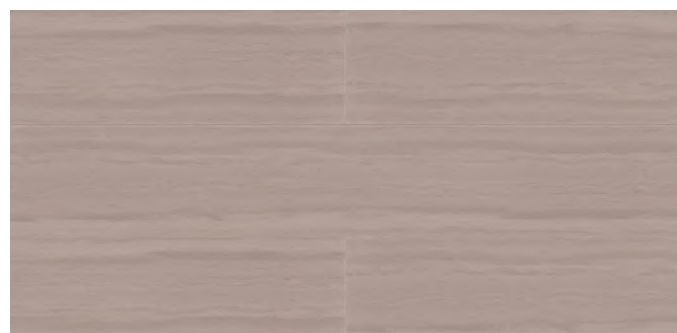


TOLI Arborpath



3517

Driftwood



3518

Nutmeg

Click on swatches to order samples or to get more information.

The product colors you see are as accurate as current photography and printing techniques allow. We recommend viewing actual product samples before final color selection.

HOMOGENEOUS TILE



Product Characteristics

Standard Spec	ASTM F 1066
Classification	Class II
Nominal Dimensions	Tile 17.7" x 17.7" (450mm x 450mm) Plank 5.9" x 35.4" (150mm x 900 mm)
Overall Thickness	3.0mm (0.120")
Packaging	Tile 30.5 SF per Carton (14 pieces) Plank 29.1 SF per Carton (20 pieces)

Fire

ASTM E 648 Critical Radiant Flux	Class 1 (>0.45/sq cm)
ASTM E 662 Smoke Generation	<450 Flaming & Non-Flaming

Test Performance

ASTM F 1066 Standard Spec for Vinyl Composition Floor Tile	Meets or Exceeds Requirements
ASTM F 925 Chemical Resistance	Passes
ASTM F 970 (Modified) Static Load Limit	1,000 PSI
ASTM D 2047 Static Coefficient of Friction	ADA Compliant
ASTM F 2199 Dimensional Stability	Passes
ASTM F 1265 Resistance to Impact	Passes
ASTM F 1304 Deflection of Tile	Passes
ASTM F 1514 Resistance to Heat	Passes
ASTM F 410 Wear Layer Thickness	0.120"
CA 01350 VOC Emissions	Passes FloorScore Certified FS-03026

Warranty

TOLI HVT is covered by a limited 10-year warranty.
Visit our website, www.cbcflooring.com for complete details.

CBC Flooring is ISO 9001 and 14001 certified



CERTIFIED BY
SCS Global Services



Exclusively from
CBC Flooring

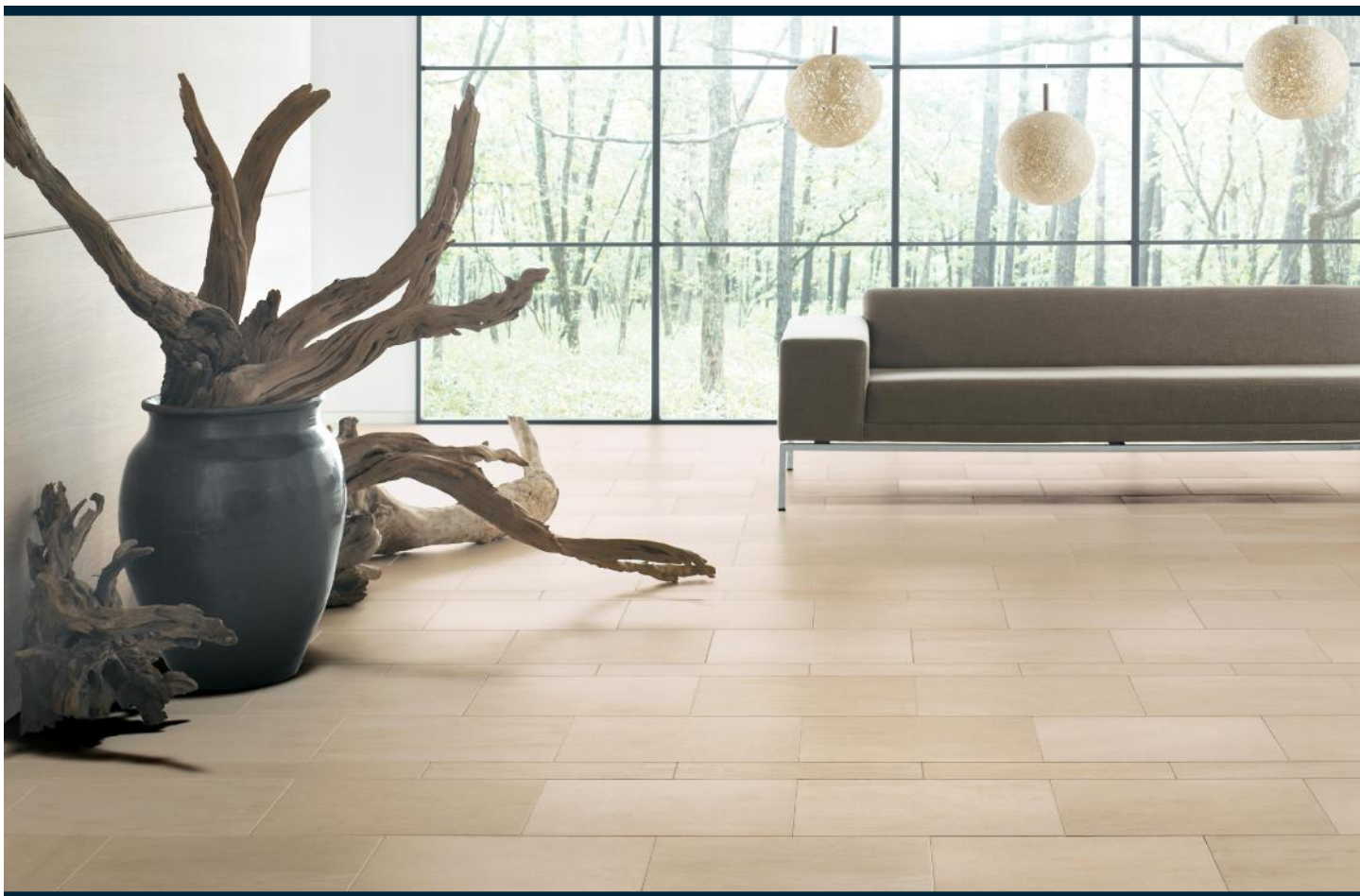
TOLI Piesta

HOMOGENEOUS VINYL TILE



COMMERCIAL
TILE FLOORING

TOLI Piesta



Have it your way.

It's our job to give you the tools you need to be inspired to create your own limited edition floor. Our TOLI Piesta tiles are available in 17.7" x 17.7" squares, 12" x 17.7" rectangles and 4" x 17.7" planks. All sizes are available in all colors making it easy for you to mix and match both sizes and colors.

Have it your way with Piesta, designed to fit your needs, your designs and your solutions.

Trust the experience. Trust TOLI.

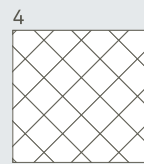
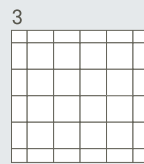
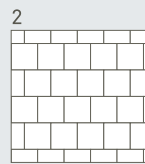
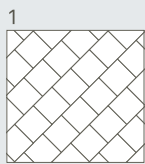
GET SAMPLES FAST 919-230-8700 www.bcflooring.com

Questions? Give us a call, we're ready to help you create your next great space.

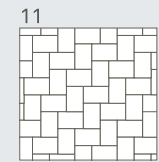
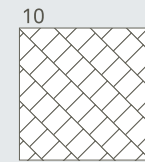
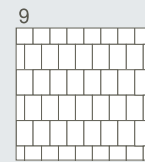
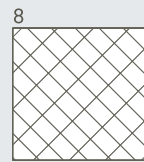
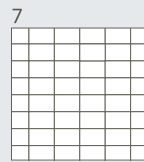
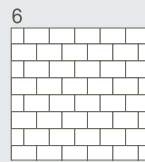
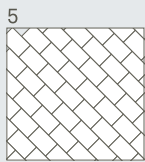
Pattern Index

1 Size

Square

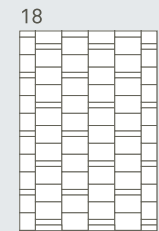
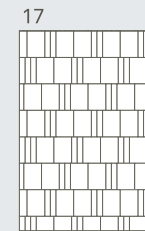
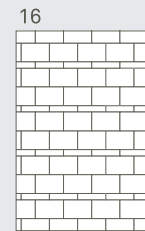
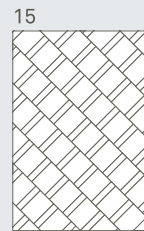
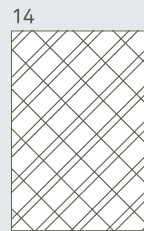
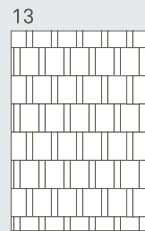
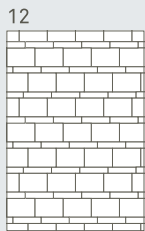


Rectangle

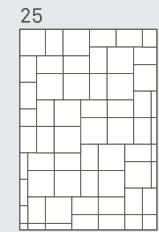
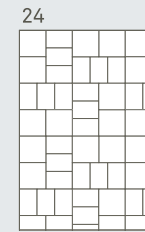
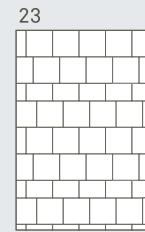
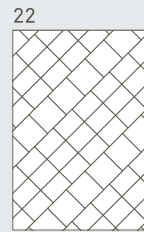
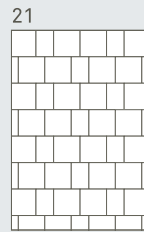
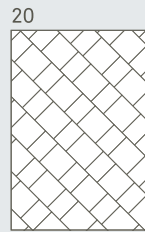
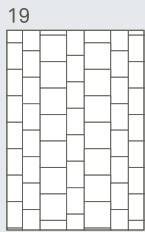


2 Sizes

Rectangle



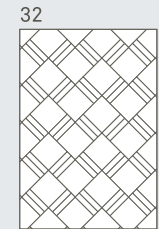
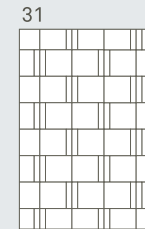
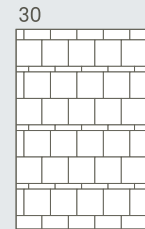
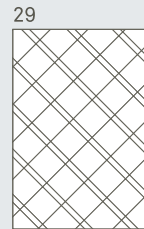
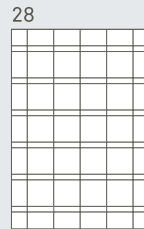
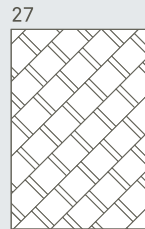
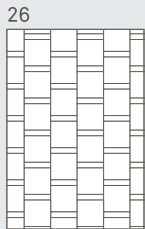
Plank



Square



Rectangle



Square



Plank



3 Sizes

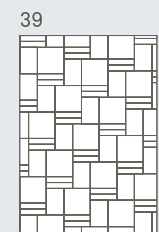
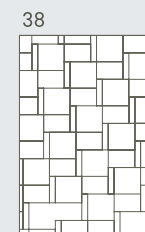
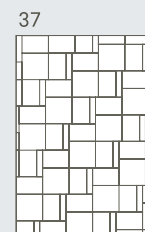
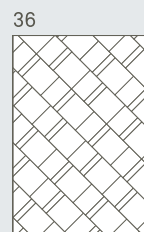
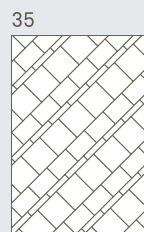
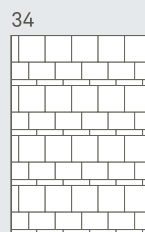
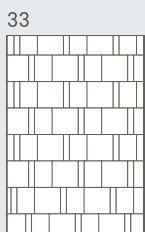
Square



Rectangle



Plank



PIESTA



■ 951-18 (square) Bone
■ 951-12 (rectangle)
■ 951-4 (plank)

A Lesson in Versatility.

CBC flooring is committed to bringing you unique flooring products of exceptional quality, design and performance. Piesta goes beyond the ordinary to support your creative ability to think out-of-the-box. The eight neutral colors are available in all three sizes. From warm to cool with subtle variations of shading this contemporary palette of inviting colors can be mixed and matched to add visual interest to any flooring project.



■ 955-18 (square) Ghost
■ 955-12 (rectangle)
■ 955-4 (plank)



■ 952-18 (square) Butte
■ 952-12 (rectangle)
■ 952-4 (plank)



■ 954-18 (square) Willow
■ 954-12 (rectangle)
■ 954-4 (plank)



■ 956-18 (square) Vapor
■ 956-12 (rectangle)
■ 956-4 (plank)



■ 953-18 (square) Buckskin
■ 953-12 (rectangle)
■ 953-4 (plank)



■ 958-18 (square) Lead
■ 958-12 (rectangle)
■ 958-4 (plank)



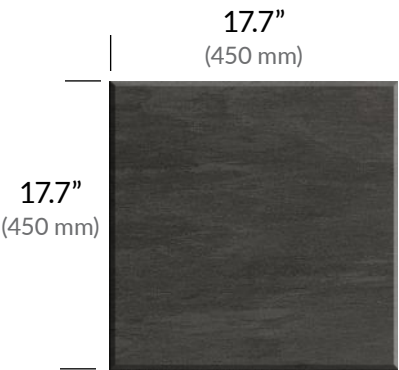
■ 957-18 (square) Ranch
■ 957-12 (rectangle)
■ 957-4 (plank)

Click on swatches to order samples or to get more information.

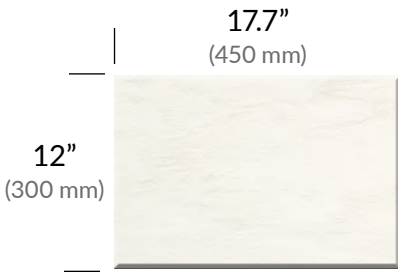
The product colors you see are as accurate as current photography and printing techniques allow. We recommend viewing actual product samples before final color selection.



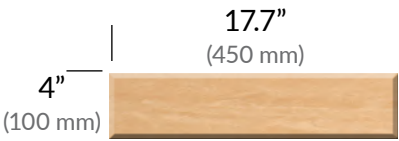
Square



Rectangle



Plank



IDEAL FOR HIGH TRAFFIC APPLICATIONS



HEALTHCARE



EDUCATION



RETAIL

PIESTA



Product Characteristics

Standard Spec	ASTM F 1066
Classification	Class II
Nominal Dimensions	17.7" x 17.7" (450mm x 450mm) 14 pcs/ctn (30.6 sf/ctn)
	17.7" x 12" (450mm x 300mm) 20 pcs/ctn (29.2 sf/ctn)
	17.7" x 4" (450mm x 100mm) 60 pcs/ctn (29.2 sf/ctn)
Overall Thickness	3.0mm (0.120")

Fire

ASTM E 648 Critical Radiant Flux	Class 1 (>0.45/sq cm)
ASTM E 662 Smoke Generation	<450 Flaming & Non-Flaming

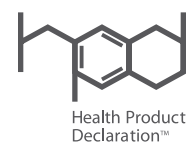
Test Performance

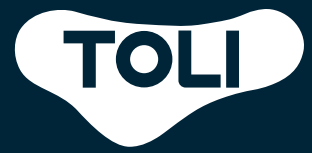
ASTM F 1066 Standard Spec for Vinyl Composition Floor Tile	Meets or Exceeds Requirements
ASTM F 925 Chemical Resistance	Passes
ASTM F 970 (Modified) Static Load Limit	500 PSI
ASTM D 2047 Static Coefficient of Friction	ADA Compliant
ASTM F 2199 Dimensional Stability	Passes
ASTM F 1265 Resistance to Impact	Passes
ASTM F 1304 Deflection of Tile	Passes
ASTM F 1514 Resistance to Heat	Passes
ASTM F 410 Wear Layer Thickness	0.120"
CA 01350 VOC Emissions	Passes FloorScore Certified FS-03026 HPD currently available

Warranty

TOLI Piesta is covered by a limited 10-year warranty.
Visit our website, www.cbcflooring.com for complete details.

CBC Flooring is ISO 9001 and 14001 certified





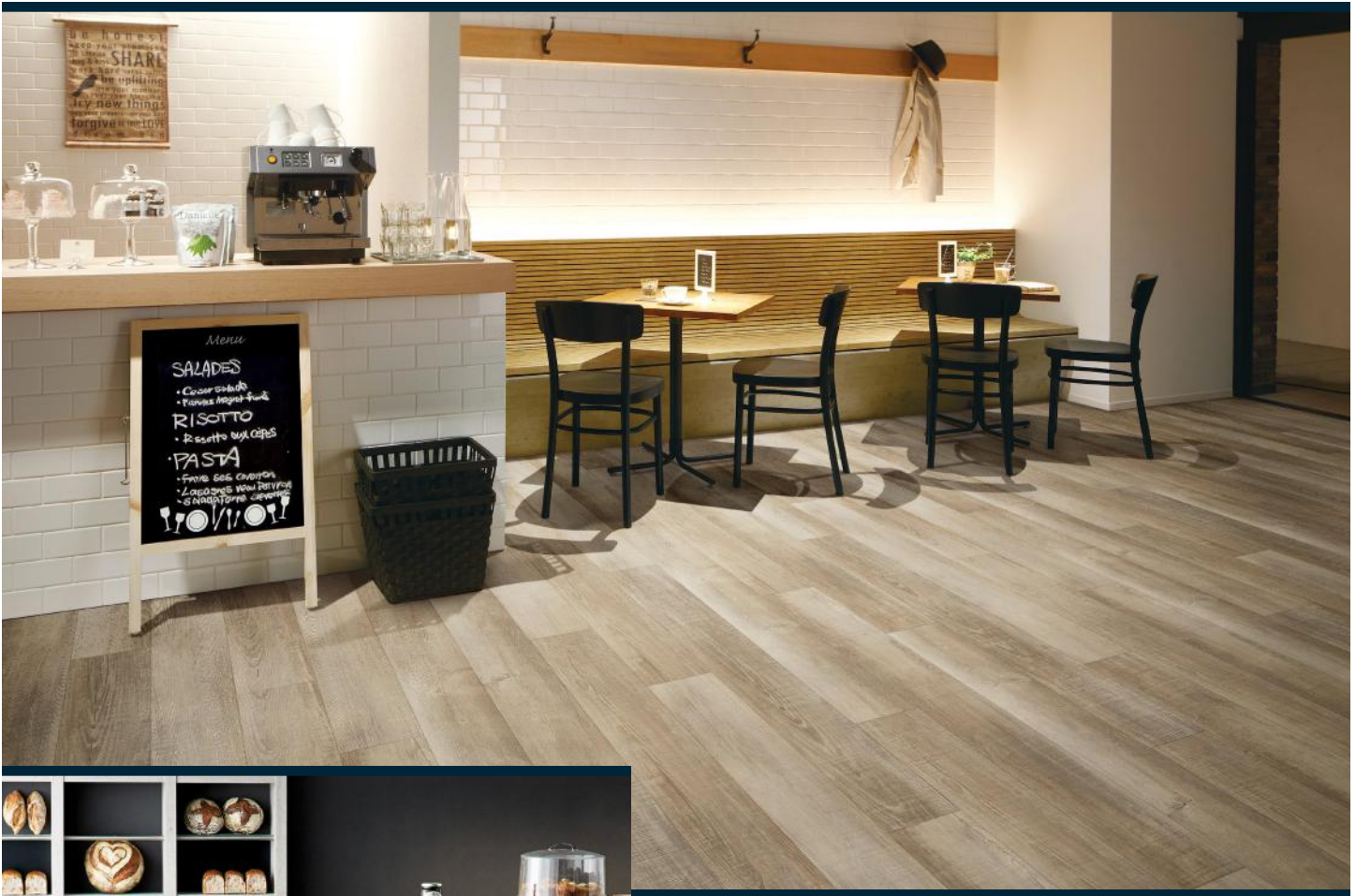
Exclusively from
CBC Flooring

TOLI Kareina Asento®



COMMERCIAL
PLANK FLOORING

Kareina Asento



Have it your way.

The rich beauty of natural wood comes together with strength and durability in TOLI Kareina Asento solid vinyl planks. Whether polished and warm or weathered and worn, our planks are available in a wide selection of wood grain patterns that capture the imagination.

TOLI Kareina Asento has been designed to bring beauty, durability and low maintenance flooring to high traffic areas. The result is our collection of finely detailed classic and realistically hewn woods. So true to nature, it truly raises the bar for the industry.



IDEAL FOR HIGH TRAFFIC APPLICATIONS



HEALTHCARE



EDUCATION



RETAIL

GET SAMPLES FAST

919-230-8700

www.cbcflooring.com

Questions? Give us a call, we're ready to help you create your next great space.



7043

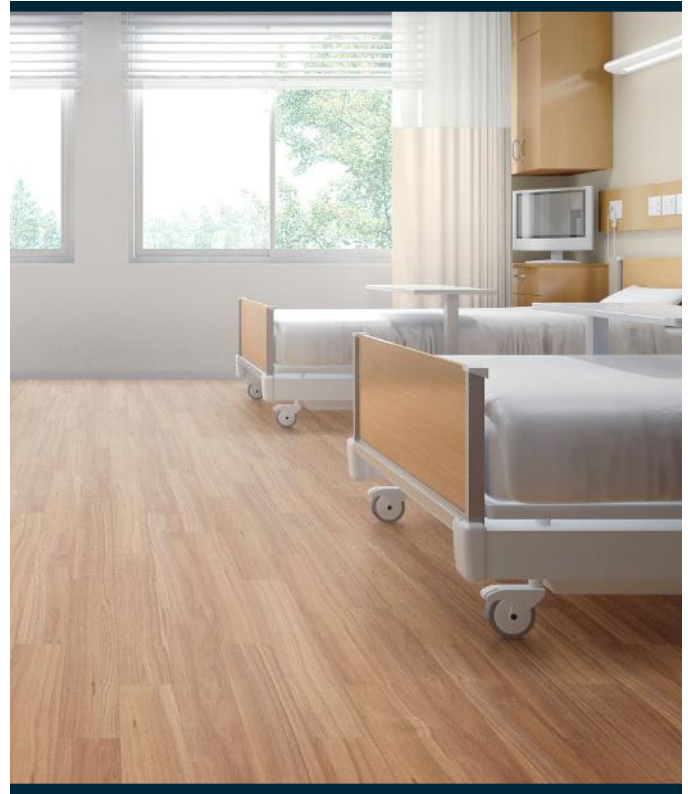
Saddle Bartuka Oak

KAREINA ASENTO 4"

Features of TOLI Kareina Asento

- ❖ 4" x 36" or 7" x 48" formats
- ❖ 2.5mm overall thickness*
- ❖ 0.5mm (20 mil) heavy commercial wear layer
- ❖ Square edge for easier maintenance
- ❖ PU wear layer for durability and low maintenance options
- ❖ 38 on trend colorways
- ❖ Part of the TOLI Coordination System
- ❖ ASTM F 970 – 750 PSI
- ❖ Ortho-Phthalate free

*TOLI Kareina Asento is also available in a 3.0mm overall thickness – contact your local CBC Flooring Sales Representative for further information.



4011

Bionda Roma Walnut



4011

Bionda Roma Walnut



4012

Macchiato Roma Walnut



4013

Ambra Roma Walnut

Click on swatches to order samples or to get more information.

The product colors you see are as accurate as current photography and printing techniques allow. We recommend viewing actual product samples before final color selection.

KAREINA ASENTO 4"



4021 Warm Vanilla Suavis Chestnut



4022 Taupe Suavis Chestnut



4024 Hemp Suavis Chestnut



4023 Nutmeg Suavis Chestnut



4001 Bronze Colonial Chestnut



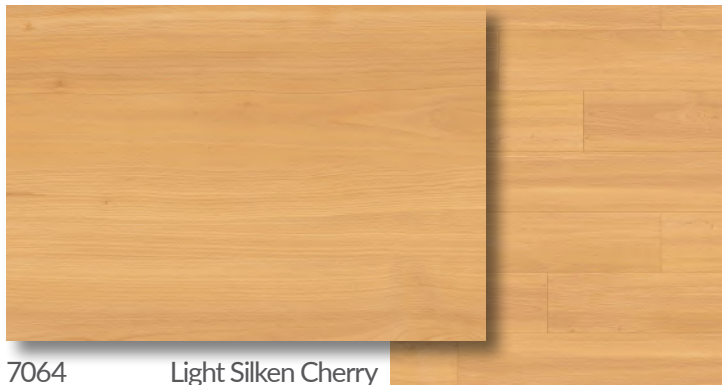
4002 Umber Colonial Chestnut



4003

Chocolate Colonial Chestnut

KAREINA ASENTO 7"



7064 Light Silken Cherry



7061 Natural Silken Cherry



7062 Stained Silken Cherry



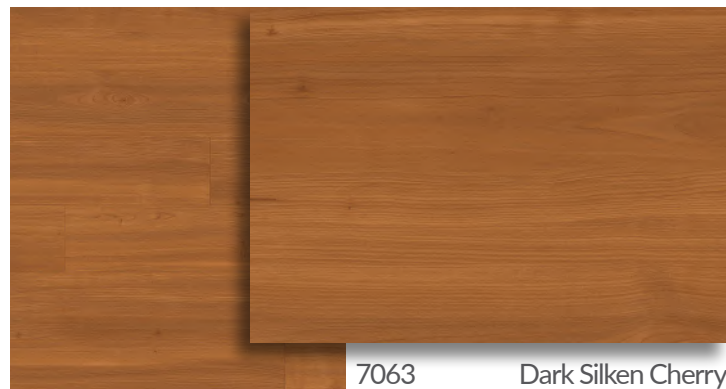
7001 Caramel Constitution Oak

TOLI Coordination

TOLI Kareina Asento is part of the TOLI Coordination System which was developed to link all TOLI product lines together through color allowing you to create the highest performing spaces with complimentary products.

The TOLI Coordination System is not a matching program. It's a program that allows you to easily find colors and designs that will work together across all TOLI products - HVT, Sheet Vinyl and LVT.

TOLI Coordination – Allowing for Ideal Product Selection While Enhancing the Creativity and Continuity of Design



7063 Dark Silken Cherry



7002 Shroom Constitution Oak

Click on swatches to order samples or to get more information.

The product colors you see are as accurate as current photography and printing techniques allow. We recommend viewing actual product samples before final color selection.

KAREINA ASENTO 7"



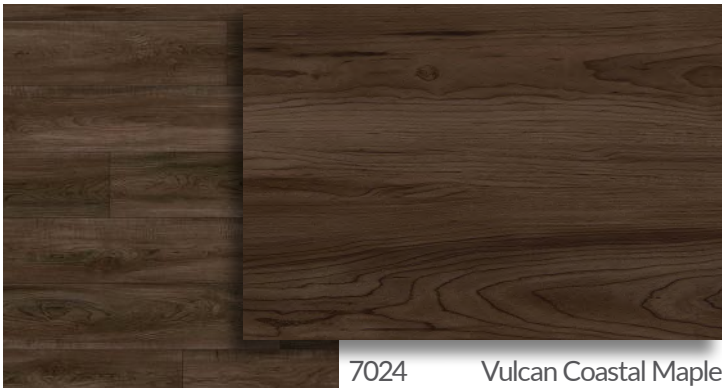
7021 Siesta Key Coastal Maple



7023 Sahara Coastal Maple



7022 Hampton Coastal Maple



7024 Vulcan Coastal Maple



7072 Apple Crisp Hearth Maple



7071 Sunset Hearth Maple



7031

Weathered Rustic Pine

KAREINA ASENTO 7"



7083 Tan Spa Curatif Oak



7082 Frost Curatif Oak



7081 Earthen Curatif Oak



7084 Whisper Curatif Oak



7012 Wheat Alpine Oak



7011 Oatmeal Alpine Oak



7013 Vanilla Swirl Alpine Oak



7014 Cocoa Alpine Oak

KAREINA ASENTO 7"



7052 Gilded Tan Micha Oak



7053 Dusk Micha Oak



7051 Spiced Rum Micha Oak



7054 Pewter Micha Oak



7042 Barrel Bartuka Oak



7041 Storm Bartuka Oak



7043

Saddle Bartuka Oak

KAREINA ASENTO



Product Characteristics

Standard Spec	ASTM 1700
Classification	Class III Type A & B
Nominal Dimensions/ Packaging	4" x 36" (102mm x 914mm) 36 pcs/ctn (36 sf/ctn) 7" x 48" (178mm x 1220mm) 15 pcs/ctn (35 sf/ctn)
Overall Thickness	2.5mm (0.10")
Wear Layer Thickness	0.5mm (0.020")

Fire

ASTM E 648 Critical Radiant Flux	Class I Passes >0.45 watts/cm ²
ASTM E 662 Smoke Generation	<450 Passes

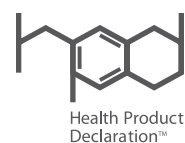
Test Performance

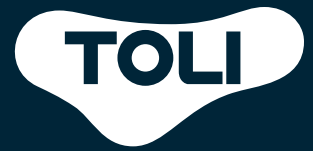
ASTM F 1700 Standard Spec for Solid Vinyl Floor	Meets or Exceeds Requirements
ASTM F 925 Chemical Resistance	Passes
ASTM F 970 (modified) Static Load Limit	750 PSI
ASTM D 2047 Static Coefficient of Friction	0.6
ASTM F 137 Flexibility	Passes
ASTM F 1514 Resistance to Heat	Passes
ASTM F 1515 Resistance to Light	Passes
CA 01350 VOC Emissions	Passes FloorScore Certified FS-05645

Warranty

TOLI Kareina Asento is covered by a limited 10-year warranty. Visit our website, www.cbcflooring.com for complete details.

CBC Flooring is ISO 9001 and 14001 certified





Exclusively from
CBC Flooring

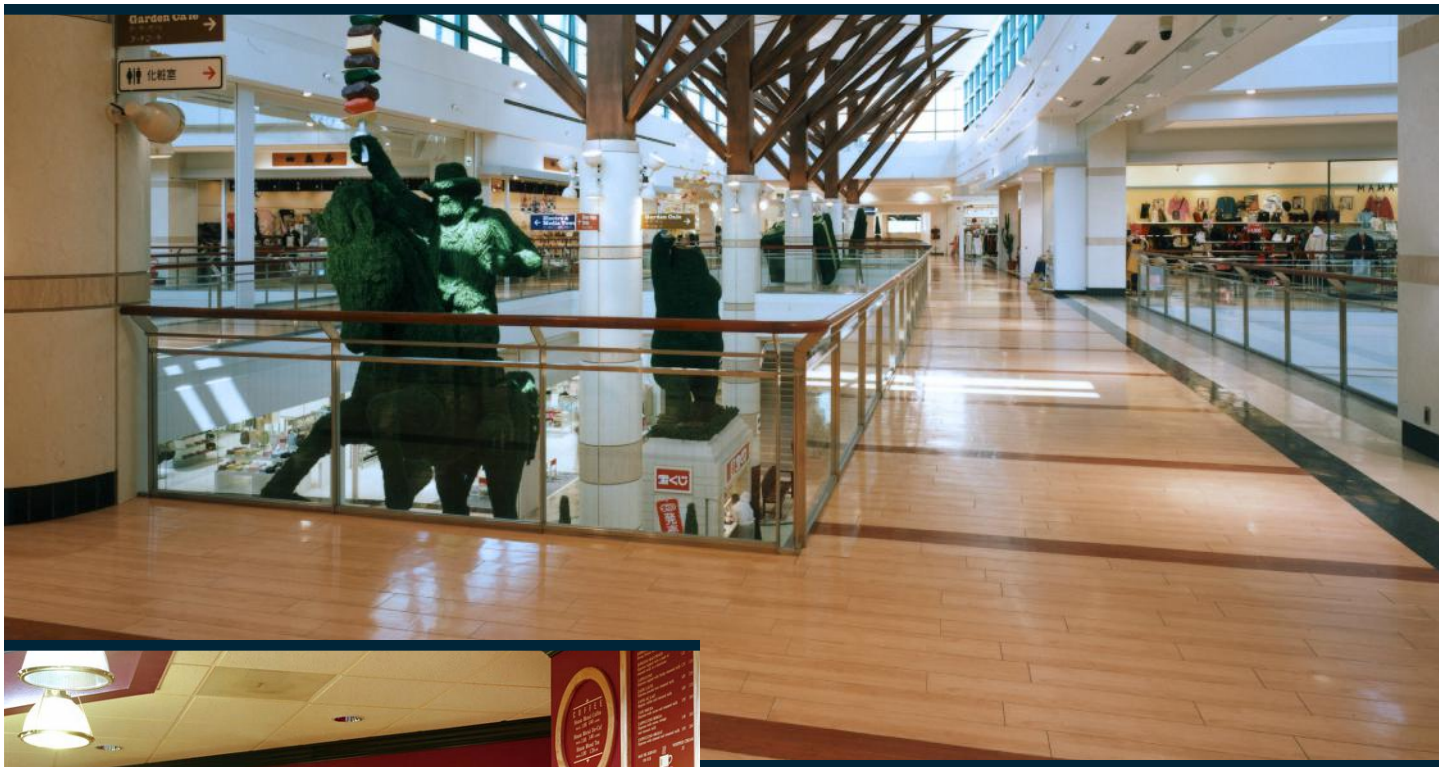
TOLI Lightwood®

LUXURY VINYL TILE



COMMERCIAL
PLANK FLOORING

TOLI Lightwood



7262E Natural Maple



1022 Golden Oak

Go with the grain.

What you need is quality flooring that stands up to high volume traffic. What you want is the rich beauty of natural wood without the warping, scratching and staining that can compromise real wood flooring. The solution? Go with Lightwood from TOLI International. Specially engineered for schools, hospitals, restaurants, retail environments and other demanding commercial areas, surface embossed Lightwood is hands down the most realistic, yet most practical resilient plank flooring around.

Trust the experience. Trust TOLI.

GET SAMPLES FAST 919-230-8700 www.cbcflooring.com

Questions? Give us a call, we're ready to help you create your next great space.

It's everything real wood wishes it were.

The highest quality films are used to give Lightwood the finely detailed wood grain appearance of natural oak, maple, cherry, cedar and other attractive wood species. It's available in 26 rich shades, in 4" and 6" planks. But that's where the similarity to real wood ends and the advantages of Lightwood begin. An extended construction process ensures Lightwood is dimensionally stable, which allows for a safe and secure installation. It also provides a higher PSI and greater resistance to indentations for long life. Lightwood has outstanding acoustical properties, too. And, while it can be waxed where a high gloss is preferred, Lightwood's low luster wear surface stands up to heat, cold, spills and heavy foot traffic with or without wax.



7850E Classic Maple

LIGHTWOOD 4" PLANKS



7261E

Bleached Maple



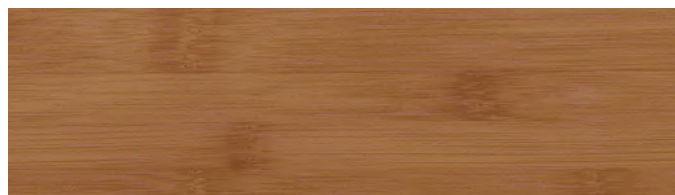
7262E

Natural Maple



3206E

Natural Bamboo



3207E

Carbonized Bamboo



7613E

matches 7813E

Medium Chestnut

IDEAL FOR HIGH TRAFFIC APPLICATIONS



HEALTHCARE



EDUCATION



RETAIL

Click on swatches to order samples or to get more information.

The product colors you see are as accurate as current photography and printing techniques allow. We recommend viewing actual product samples before final color selection.

LIGHTWOOD 4" PLANKS



1021

Honey Oak



7671E

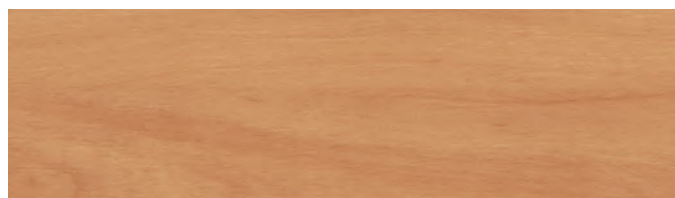
matches 7871E

Cedar Plank



1022

Golden Oak



3212E

Brazilian Cherrywood



7043

Red Oak



7281E

Light Cherrywood



7023

Medium Oak

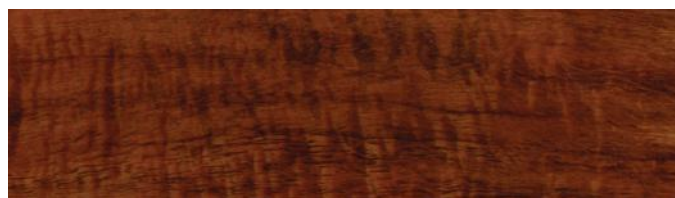


7282E

Classic Cherrywood



7850E Classic Maple



7681E

matches 7881

Rustic Cherrywood



7283E

Dark Cherrywood

Click on swatches to order samples or to get more information.

The product colors you see are as accurate as current photography and printing techniques allow. We recommend viewing actual product samples before final color selection.

LIGHTWOOD 6" PLANKS



7871E Cedar Plank

Indulge your creative side.

Lightwood is available in a large selection of patterns and combines easily with other TOLI tile products for a limitless range of design possibilities.



7871E

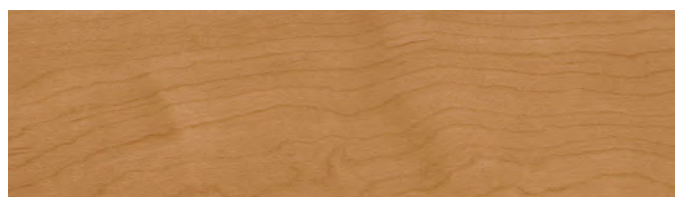
matches 7671E

Cedar Plank



1911E

White Sycamore



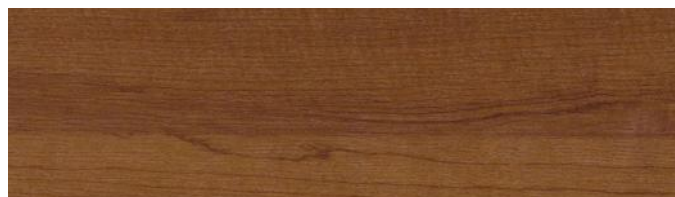
7850E

Classic Maple



1916E

American Cherry



7813E

matches 7613E

Medium Chestnut



7881

matches 7681E

Rustic Cherrywood



7865

Stained Spruce



3516

Antique Plank



7866

Blackened Spruce

Click on swatches to order samples or to get more information.

The product colors you see are as accurate as current photography and printing techniques allow. We recommend viewing actual product samples before final color selection.

LIGHTWOOD



Product Characteristics

Standard Spec	ASTM F 1700
Classification	Class III Type A & B
Nominal Dimensions/ Packaging	4" x 35.4" (100mm x 900mm) 30 pcs/ctn (29.2 sf/ctn)
	6" x 35.6" (150 mm x 900 mm) 20 pcs/ctn (29.2 sf/ctn)
Overall Thickness	3.0mm (0.120")
Wearlayer Thickness	0.5mm (0.020")

Fire

ASTM E 648 Critical Radiant Flux	Class 1 (>0.45/sq cm)
ASTM E 662 Smoke Generation	<450 Passes

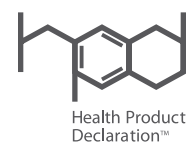
Test Performance

ASTM F 1700 Standard Spec for Solid Vinyl Tile	Exceeds Requirements
ASTM F 925 Chemical Resistance	Passes
ASTM F 970 (Modified) Static Load Limit	1,000 PSI
ASTM C 1028 Static Coefficient of Friction	≥0.6 ADA Compliant
ASTM F 137 Flexibility	Passes
ASTM F 1514 Resistance to Heat	Passes
ASTM F 1515 Resistance to Light	Passes
CA 01350 VOC Emissions	Passes FloorScore Certified FS-03027 HPD currently available

Warranty

TOLI Lightwood is covered by a limited 10-year warranty. Visit our website, www.cbcflooring.com for complete details.

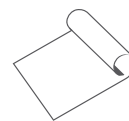
CBC Flooring is ISO 9001 and 14001 certified



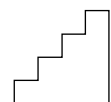
Exclusively from
CBC Flooring

Step Easy Collection

PATHWAYS / NATTICE® / STAIR TREADS



COMMERCIAL
SHEET FLOORING



COMMERCIAL
STAIR TREADS

Pathways



In, out and in between.

Takiron Pathways is the slip-resistant flooring that is soft enough for bare feet, but tough enough for heavy rolling carts and pallet jacks. Its rich texture delivers the safety and looks to transform heavy traffic areas in healthcare, educational, retail and hospitality settings.

Pathways comes in five bright colors and five neutral tones that look as good in the front lobby as they do in the service corridor. Transform a utilitarian space or introduce an interesting and low-maintenance visual to public areas to improve safety without sacrificing beauty...

Safety first. Beauty first.

The safe, slip-resistant surface that keeps you safer inside and out while standing up to heavy foot traffic. Takiron Pathways' rich texture delivers excellent traction, but is supple enough for bare feet. It looks cool inside and stands up to the heat and sunlight of exterior applications.



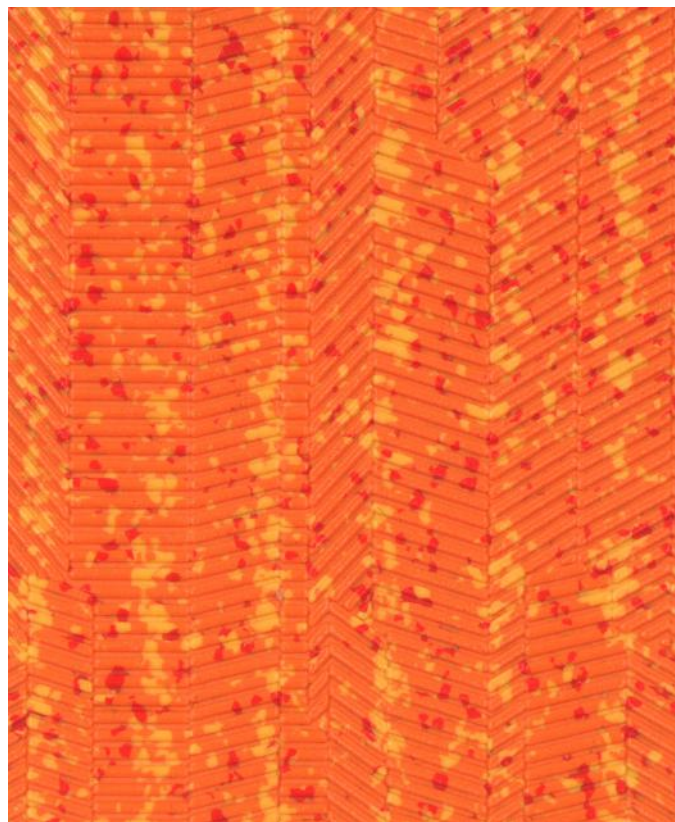
GET SAMPLES FAST 919-230-8700 www.cbcflooring.com
Questions? Give us a call, we're ready to help you create your next great space.

PATHWAYS



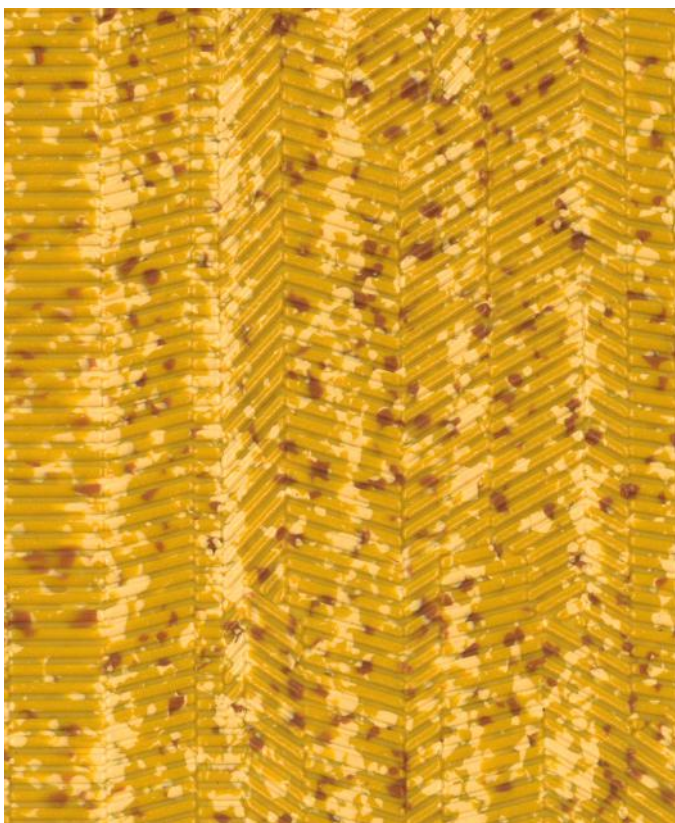
11

Crimson



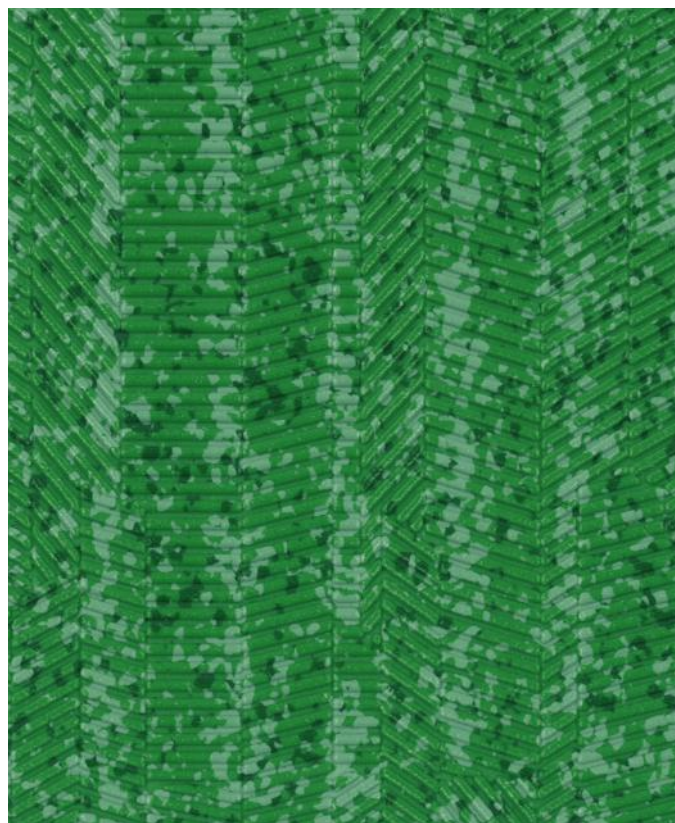
21

Sunset



31

Golden



41

Meadow

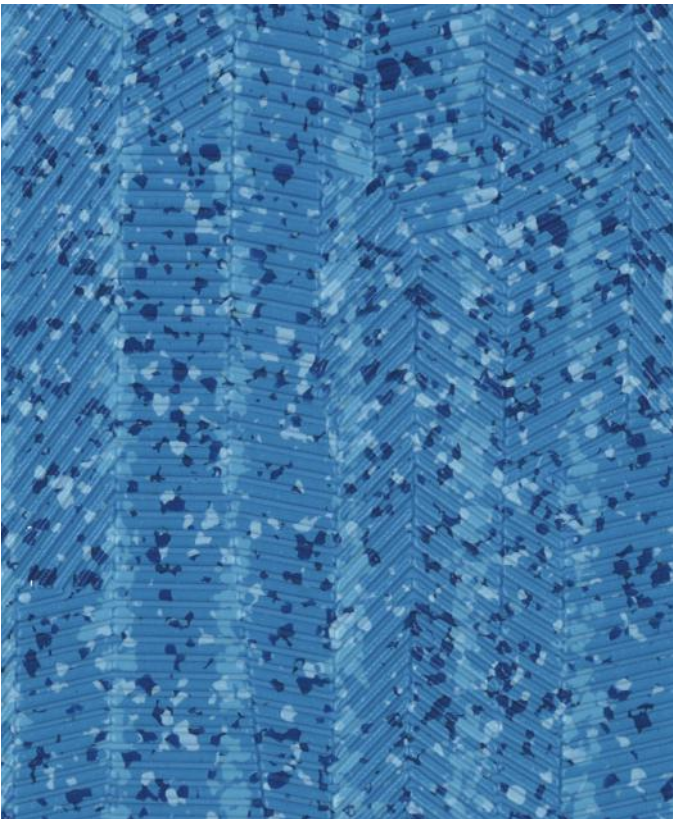
Pathways colors 92, 91 and 82 are available with coordinating interior/exterior stair treads.



82 Taupe



91 Grey



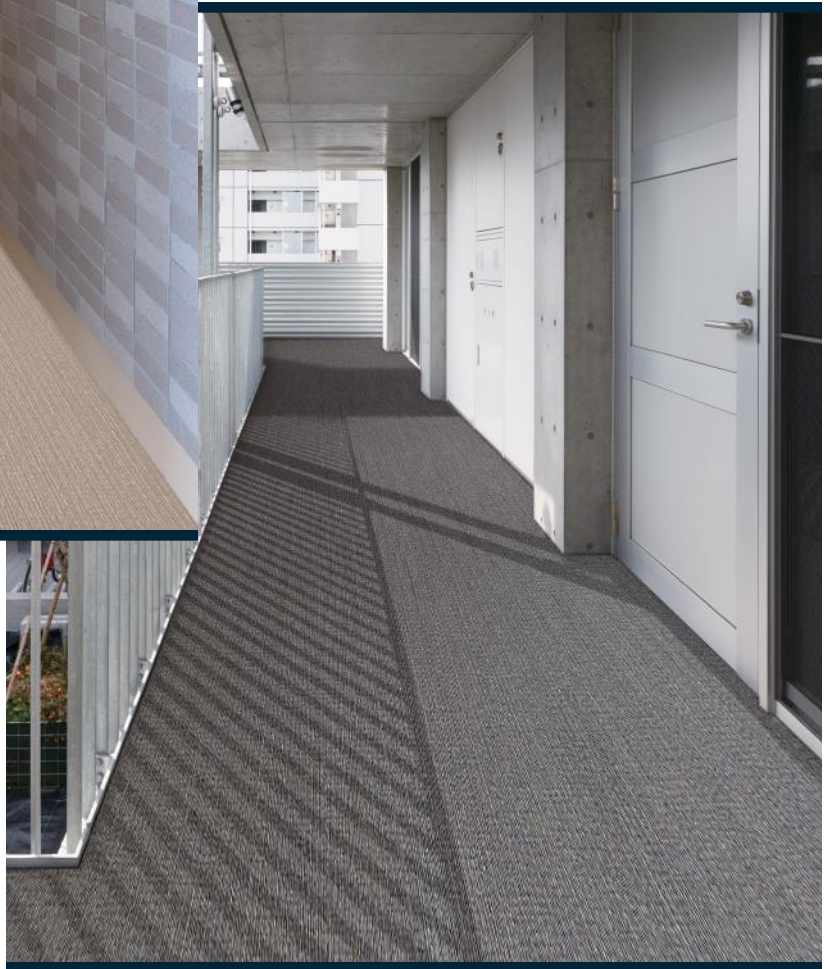
51 Heavenly



92 Charcoal

Nattice

Whether installed interior or exterior, Nattice's subtle texture provides a softer visual with the same slip resistance and durability you have come to expect from Takiron. Nattice sheet pairs perfectly with its color-coordinating Stair Treads for a beautiful, functional and safe environment



NATTICE



833

Autumn Fog



936

Chromed Cloud



837

Mudslide



937

Storm

Stair Treads

Stepping up and stepping out.

Takiron Treads are the tread and riser combination that provides slip-resistant protection to interior and exterior stairways. Designed to pair beautifully with Takiron's Pathways and Nattice interior/ exterior slip-resistant flooring, this tread is designed to withstand heavy foot traffic – and Mother Nature.

Lasting Beauty

- Approved for interior or exterior installations
- Superior color retention and fade resistance
- Color coordinates with our Pathways and Nattice Sheet

Product Features

- One piece tread and riser
- 6' and 4' lengths
- Tread depth 19.69"
- Available with yellow nosing to satisfy CA Title 24 and ADA Recommendations for the Visually Impaired (6' only)

Easy Installation & Maintenance

- Can be installed with our double-faced installation tape
- Excellent cleanability
- Lower life cycle cost

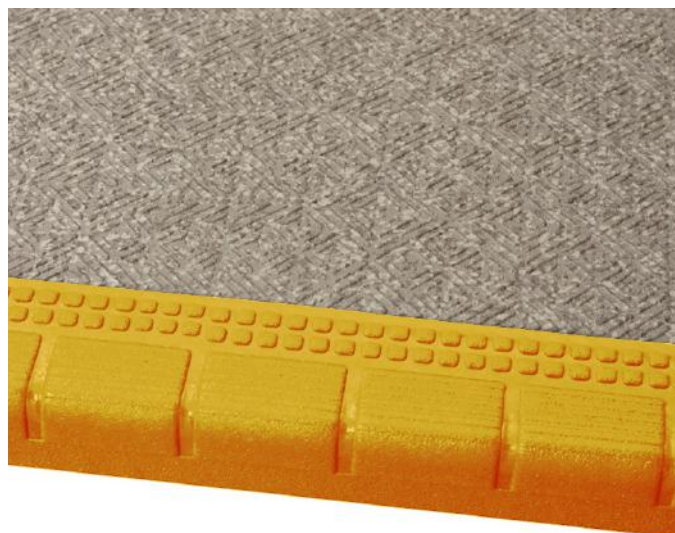


STAIR TREADS (Pathways Coordinates)



82-5WP

Taupe



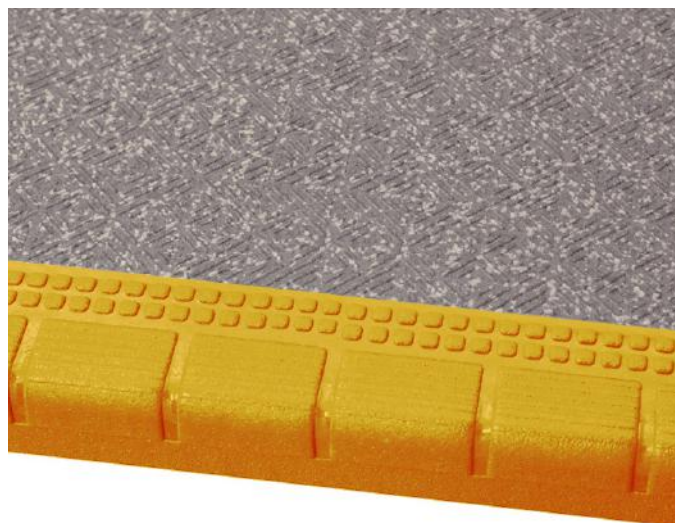
82-5YP

Taupe w/Yellow Nose



91-5WP

Grey



91-5YP

Grey w/Yellow Nose



92-5WP

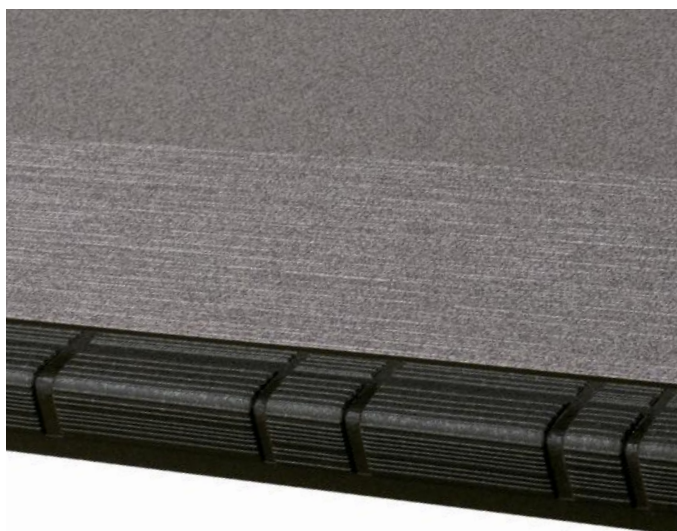
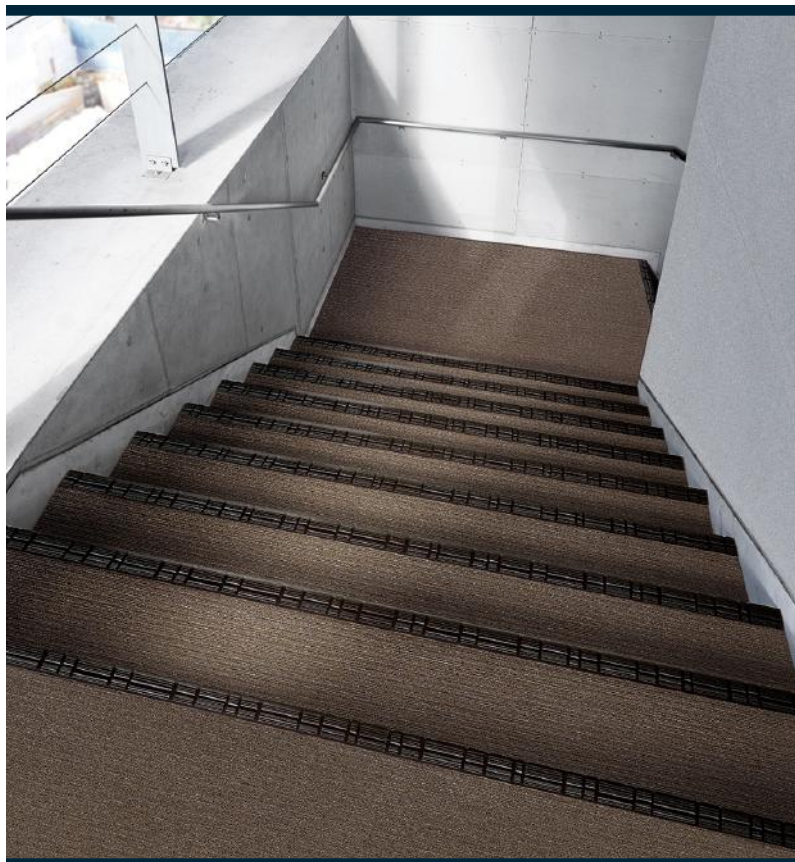
Charcoal



92-5YP

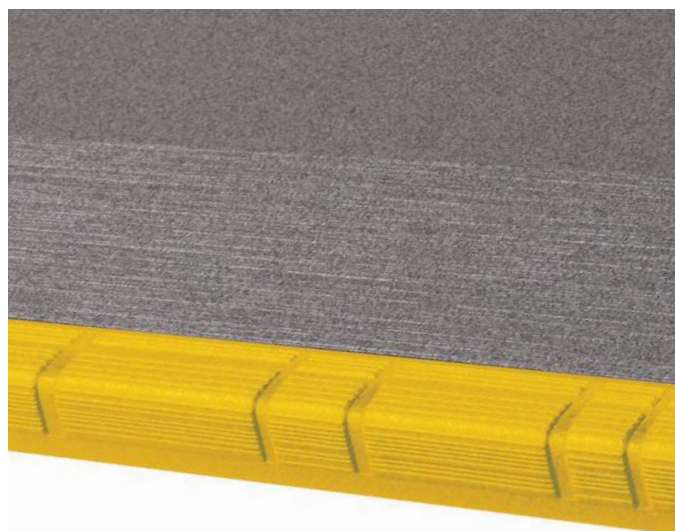
Charcoal w/Yellow Nose

STAIR TREADS (Nattice Coordinates)



936-8WN

Chromed Cloud



936-8YN

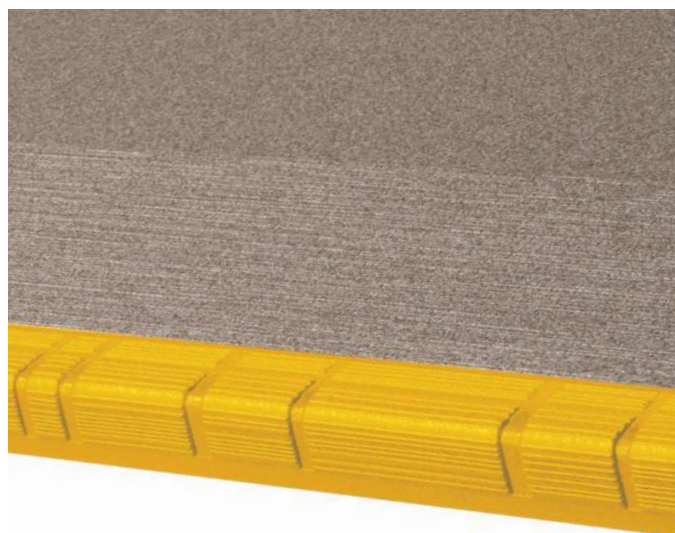
Chromed Cloud w/Yellow Nose

STAIR TREADS (Nattice Coordinates)



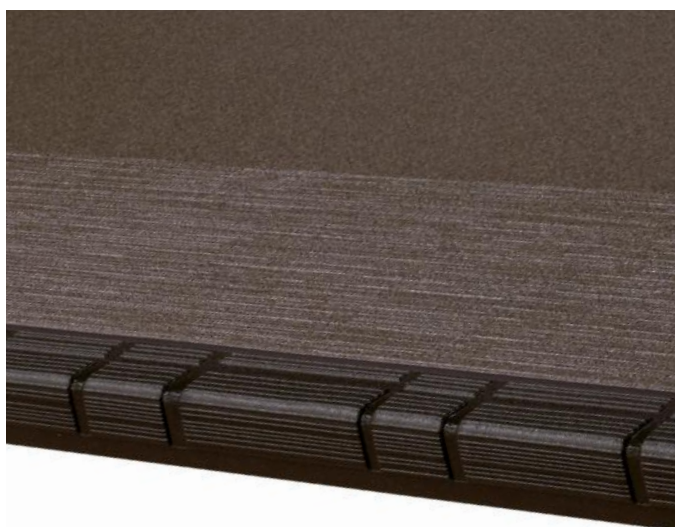
833-8WN

Autumn Fog



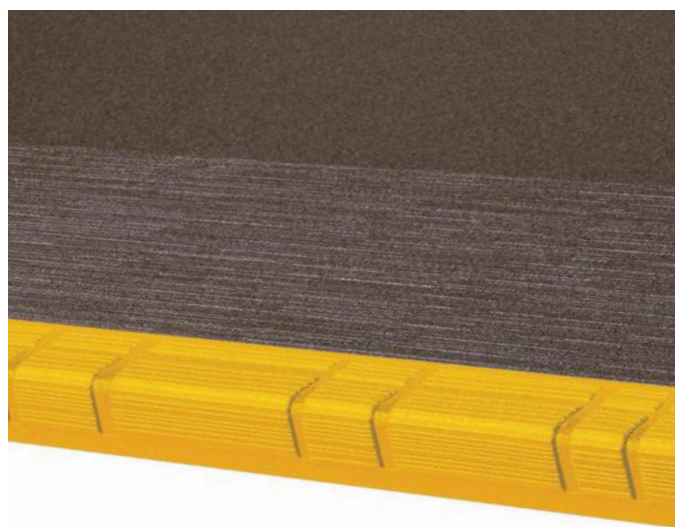
833-8YN

Autumn Fog w/Yellow Nose



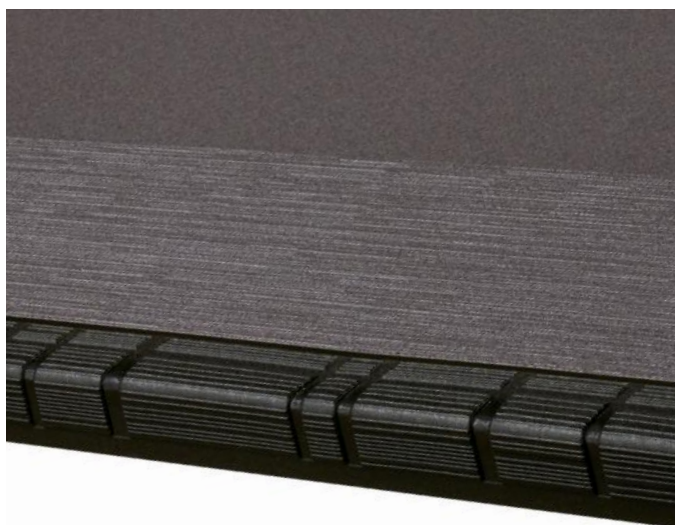
837-8WN

Mudslide



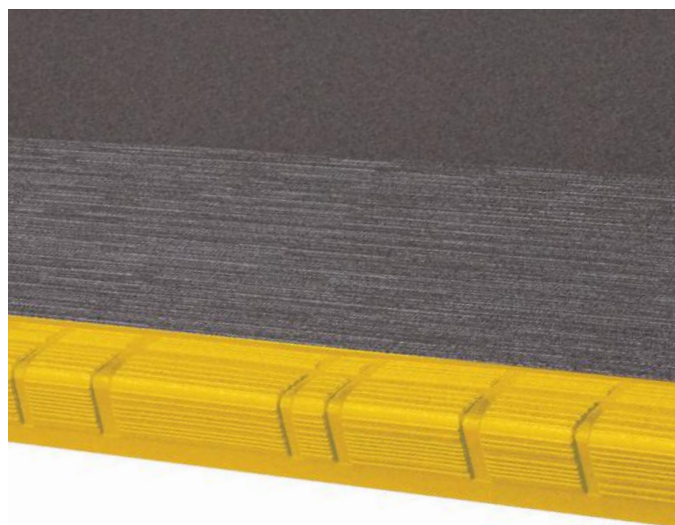
837-8YN

Mudslide w/Yellow Nose



937-8WN

Storm



937-8YN

Storm w/Yellow Nose

Pathways/Nattice

Product Characteristics

Standard Spec	ASTM 1303
Classification	Type II
Backing Class	Class B
Nominal Dimensions	6' Wide x 66' Long (1820mm x 20m)
Overall Thickness	0.10" (2.5mm)
Packaging	44 SY per roll

Fire

ASTM E648 Critical Radiant Flux	Passes
ASTM E662 Smoke Density	Passes <450 Flaming and Non-Flaming

Test Performance

ASTM F 1303 Standard Spec for Vinyl Floor Covering with Backing	Meets or Exceeds Requirements
ASTM D 2047 Static Coefficient of Friction	≥0.8 ADA Compliant Wet and Dry
ASTM F 970 Static Load Limit	>750 PSI
ASTM F 925 Chemical Resistance	No effects
ASTM F 137 Flexibility	Passes
ASTM F 1914 Residual Indentation	Passes
ASTM F 1514 Resistance to Heat	Exceeds ($\Delta E < 1$)
ASTM F 1515 Resistance to Light	Exceeds ($\Delta E < 1$)
CA 01350 VOC Emissions	Passes FloorScore Certified FS-03268

Warranty

Takiron Pathways & Nattice are covered by a limited 5-year warranty. Visit our website, www.cbcflooring.com for complete details.

CBC Flooring is ISO 9001 and 14001 certified

Stair Treads

Product Characteristics

Standard Spec	ASTM F 1303
Classification	Type TV
Tread Thickness	0.10" (2.5mm)
Tread Depth	19.69" (500mm)
Nose Height	1.57" (40mm)
Nosing Thickness	0.165" (4mm)
Packaging	4' Length 7 pcs/ctn 6' Length 5 pcs/ctn

Fire

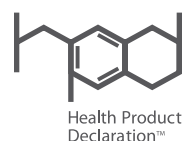
ASTM E648 Critical Radiant Flux	Class 1
ASTM E662 Smoke Density	Passes <450 Flaming and Non-Flaming

Test Performance

ASTM D 2047 Static Coefficient of Friction	≥0.8 ADA Compliant Wet and Dry
ASTM D 3389 Abrasion Resistance	<0.13 mg/cycle
ASTM F 1514 Resistance to Heat	Exceeds ($\Delta E < 1$)
ASTM F 1515 Resistance to Light	Exceeds ($\Delta E < 1$)
ASTM F 925 Chemical Resistance	No effects
ASTM F 970 Static Load Limit	>600 PSI
CA 01350 VOC Emissions	Passes FloorScore Certified FS-07215

Warranty

Takiron Stair Treads are covered by a limited 5-year warranty. Visit our website, www.cbcflooring.com for complete details.



GET SAMPLES FAST 919-230-8700 www.cbcflooring.com

Questions? Give us a call, we're ready to help you create your next great space.

Resistance to Chemicals

Agent	Surface Dulling				Surface Attack				Color Change			
	Mature® AdVantage	Kareina Asento®	Homogeneous Vinyl Tile	Nattice™/Pathways/ Stair Treads	Mature AdVantage	Kareina Asento	Homogeneous Vinyl Tile	Nattice/Pathways/ Stair Treads	Mature AdVantage	Kareina Asento	Homogeneous Vinyl Tile	Nattice/Pathways/ Stair Treads
Acetic Acid - 5%	0	0	0	0	0	0	0	0	0	0	0	0
Acetic Acid - 28%	0	0	0	0	0	0	0	0	0	0	0	0
Ammonia - 5%	0	0	0	0	0	0	0	0	0	0	0	0
Ammonium Hydroxide - 10%	0	0	0	0	0	0	0	0	0	0	0	0
Ammonium Hydroxide - 30%	0	0	0	0	0	0	0	0	0	0	0	0
Aniline Blue - 2.5%	0	0	0	0	0	0	0	0	1	0	3	2
Bleach - 5%	0	0	0	0	0	0	0	0	0	0	0	0
Dialysis Solution	0	0	0	0	0	0	0	0	0	3	0	0
Ethyl (Denatured) Alcohol	0	0	0	0	0	0	0	0	0	0	0	0
Formaldehyde - 37%	0	0	0	0	0	0	0	0	0	0	0	0
Giesma Blood Stain	0	0	0	0	0	0	0	0	3	3	3	3
Hand Sanitizer (Alcohol Based)	0	0	0	0	0	0	0	0	0	0	0	0
Hema 3 Solution	0	0	0	0	0	0	0	0	0	0	0	0
Hydrochloric Acid - 5%	0	0	0	0	0	0	0	0	0	0	0	0
Hydrochloric Acid - 38%	0	0	0	0	0	0	0	0	0	0	0	0
Hydrogen Peroxide - 30%	0	0	0	0	0	0	0	0	0	0	0	0
Kerosene	0	0	0	0	0	0	0	0	0	0	0	0
Mineral Oil	0	0	0	0	0	0	0	0	0	0	0	0
Olive Oil	0	0	0	0	0	0	0	0	0	1	0	0
Phenol - 5%	0	0	0	0	0	0	0	0	0	1	1	0
Phenolic Disinfectant Cleaner	0	0	0	0	0	0	0	0	0	1	0	2
Potassium Hydroxide - 15%	0	0	0	0	0	0	0	0	0	0	0	0
Quaternary Disinfectant Cleaner	0	0	0	0	0	0	0	0	0	1	0	0
Rubbing Alcohol (5% Isopropyl)	0	0	0	0	0	0	0	0	0	0	0	0
Sodium Hydroxide - 5%	0	0	0	0	0	0	0	0	0	0	0	0
Sodium Hydroxide - 15%	0	0	0	0	0	0	0	0	0	0	0	0
Sodium Hydroxide - 50%	0	0	0	0	0	0	0	0	0	0	0	0
Sulfuric Acid - 5%	0	0	0	0	0	0	0	0	0	0	1	0
Turpentine	0	0	0	0	0	0	0	0	0	0	0	0
Unleaded Gasoline (Regular Grade)	0	0	0	0	0	0	0	0	0	0	0	3
Uric Acid	0	0	0	0	0	0	0	0	0	1	0	0

0 - No Change

1 - Slight Change

2 - Moderate Change

3 - Severe Change

Notes:

According to ASTM, the F925 test method is subjective and test results are nonnumeric;

This test is not a stain test - it is intended to determine the effect specific chemicals (or agents) will have on the surface of the flooring;

The flooring product is tested without any applied sealers or floor finishes;

For the most accurate results, CBC America recommends using the customer's chemicals on actual product samples that have been treated with the maintenance products to be used on the finished floor;

Flooring sample material for testing is readily available from CBC America;

For more detailed information, please contact CBC America.

Adhesive Reference

	Product	RH Limit ASTM 2170	Vapor Emission ASTM F1899	pH Limit	Weight (lbs) per Unit	Trowel Size and Usage Notes	Unit Size	Coverage per Unit	Recommended				TOLI®			C.I. TAKIRON			
									Wet or Flood Washed	Extreme Heat or Cold	Heavy Static Load	Custom Designs	Mature® AdVantage	Lightwood®/Kareina Asento®	Homogeneous Vinyl Tile	Nattice® & Pathways (Interior)*	Nattice & Pathways (Exterior)	Tread & Risers (Interior)	Tread & Risers (Exterior)
Adhesives	CBC® 5001 Acrylic	85%	6 lbs / 24 hours / 1,000 SF	10 pH	40.0	1/16 x 1/16 x 1/16 V-notch	4 Gallon	670-750 SF		◆		◆				P		P	
						1/16 x 1/16 x 1/16 V-notch	4 Gallon	720-800 SF		◆								N	
						1/32 x 1/16 x 1/32 U-notch	4 Gallon	880-1,040 SF		◆		◆	P	P	P				
						1/32 x 1/16 x 1/32 U-notch	4 Gallon	1,200-1,400 SF					N	N	N	N			
	CBC 951 Epoxy	90%	8 lbs / 24 hours / 1,000 SF		29.0	1/32 x 1/16 x 1/32 U-notch	1 Gallon	175-225 SF	◆	◆	◆	◆	◆	◆	◆	◆	◆	◆	◆
Tread Accessories	Opti-Tape 9.5" Width				7.3		1 roll/ctn	165 LF per roll										◆	
	CBC 800 Nose Caulk				1.7	Double Caulking Gun	13.5 oz. Tube	40 LF per tube		◆								◆	◆

P = Porous surface
 N = Non-porous surface
 ◆ = Porus & non-porous surface
 * = Interior wet areas follow exterior instructions

CBC® Flooring
 Phone: (919) 230-8700
 Website: www.cbcflooring.com
 E-Mail: technical@cbcflooring.com
 04-22

TOLI Corporation and C.I. Takiron Corporation are ISO 9001 and ISO 14001 certified.
 CBC®, Kareina Asento®, and Nattice® are trademarks of CBC America LLC.
 C.I. TAKIRON® is a trademark of C.I. Takiron Corporation.
 TOLI®, Mature®, and Lightwood® are trademarks of TOLI Corporation.

Products LEED Chart



USGBC-LEED Credits

Materials & Resources

Indoor Environmental Quality

Product	MR Credit 1.2: Building Reuse	MR Credit 2: Construction Waste Management	MR Credit 3.1: Material Reuse	Recycled Content Pre-Consumer	Recycled Content Post-Consumer	MR Credit 4: Recycled Content Contribution (Sum of post-consumer + 1/2 pre-consumer)	IEQ Credit 4.1: Low Emitting Materials - Adhesives	IEQ Credit 4.3: Low Emitting Materials - Flooring Systems	FloorScore Certification Number	California Section 01350 Compliant
Arborpath	✓	✓	✓	>28%	>4%	18%	✓	✓	FS-03026	✓
FasolPlus	✓	✓	✓	>50%	0-2%	26%	✓	✓	FS-03026	✓
Kolurpath	✓	✓	✓	>35%	0-2%	18.5%	✓	✓	FS-03026	✓
Lightwood	✓	✓	✓	>35%	0-2%	18.5%	✓	✓	FS-03027	✓
Linotesta	✓	✓	✓	>50%	0-2%	26%	✓	✓	FS-03026	✓
Mature AdVantage	✓	✓	✓	>14.5%	>14%	21.25%	✓	✓	FS-03031	✓
Piesta	✓	✓	✓	>28%	>4%	18%	✓	✓	FS-03026	✓
Strataline	✓	✓	✓	>28%	>4%	18%	✓	✓	FS-03026	✓
Terraline	✓	✓	✓	>35%	0-2%	18.5%	✓	✓	FS-03026	✓
Viale	✓	✓	✓	>50%	0-2%	26%	✓	✓	FS-03026	✓
Nattice	✓	✓	✓	12%	8%	14%	✓	✓	FS-03268	✓
Pathways	✓	✓	✓	12%	8%	14%	✓	✓	FS-03268	✓
Stair Treads	✓	✓	✓	6%	4%	7%	✓	✓	FS-07215	✓

Based on the 2009 LEED rating system and the overall scope of your project TOLI products may contribute to your LEED scorecard.